



# FLORIDA'S TURNPIKE ENTERPRISE

## MEDIA ADVISORY

CHARLIE CRIST  
*Governor*

STEPHANIE KOPELOUSOS  
*Secretary of Transportation*

Contacts:  
Christa Deason  
Phone: 407-264-3492

For Immediate Release

### Central Florida Weekly Lane Closures and Work Zone Advisory

OCOE, FL (October 4, 2007) — Florida's Turnpike announces lane closures and work zone information for construction and maintenance projects in Central Florida **beginning Sunday, October 7, 2007.**

Florida's Turnpike strives to maintain traffic flow in work zones; however, motorists may encounter heavier traffic near construction sites. Motorists should drive with caution through the work zones, and adhere to posted detour signs and speed limits. **Note:** Speeding fines double in construction zones when workers are present.

### Turnpike Mainline

#### OSCEOLA COUNTY

#### STATE ROAD 60 WIDENING PROJECT (MILEPOSTS 192-194)

- Turnpike motorists should expect single, outside lane closures, both north- and southbound, 7 a.m. to 7 p.m., Monday through Thursday, and 7 a.m. to 12 p.m. (noon), on Fridays until further notice

**PROJECT DESCRIPTION:** The Florida Department of Transportation District 4 is widening State Road 60 through Osceola County, including reconstruction of the bridge over the Turnpike near Yeehaw Junction.

#### ROADWAY RESURFACING PROJECT (MILEPOSTS 198-207 and 227-249)

- Turnpike motorists should expect single lane closures, both north- and southbound, 8 a.m. to 5 p.m., Monday, October 8 to Thursday, October 11; 10 a.m. to 3 p.m., Friday, October 12; and 7 a.m. to 4 p.m., Saturday, October 13, for paving operations.
- Turnpike motorists should expect single lane closures, both north- and southbound, overnight 10 p.m. to 6 a.m., Sunday, October 7 and 8 p.m. to 6 a.m., Monday, October 8 to Thursday, October 11 for milling and resurfacing operations between mileposts 198 and 207 and 227 to 243.

**PROJECT DESCRIPTION:** This \$29 million resurfacing project includes milling and resurfacing portions of the roadway including exit ramps and toll plaza lanes, and widening some roadway shoulders. The project also includes the installation of guardrail.

The resurfacing project is scheduled for completion in June 2008.

### BOGGY CREEK ROAD BRIDGE REPLACEMENT (MILEPOSTS 245-247)

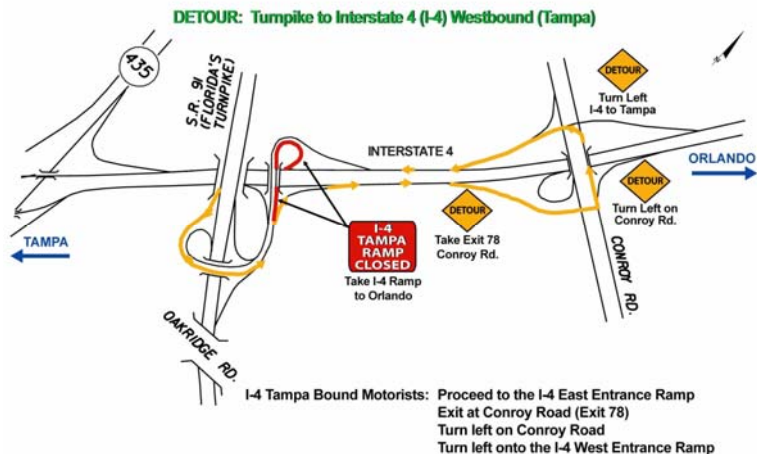
- Turnpike motorists should expect single lane closures, both north- and southbound, 7 p.m. to 6 a.m. These lane closures accommodate work to install the new Boggy Creek Bridge over the Turnpike.

**PROJECT DESCRIPTION:** Boggy Creek Road is being widened, which requires reconstruction of the Turnpike overpass.

### ORANGE COUNTY

#### TURNPIKE WIDENING PROJECT-BEACHLINE TO I-4 (MILEPOSTS 254-259)

- Single lane closures are also to be expected on US 17-92/441 (Orange Blossom Trail), at the Turnpike between Land Street Rd and Consulate Drive from 10 p.m. to 6 a.m.
- Motorists traveling on Florida's Turnpike between mileposts 254 and 259 should expect delays due to intermittent, single lane closures, both north-and southbound, Sunday through Thursday, during the overnight hours of 10 p.m. and 6 a.m.
- Motorists should be alert for construction vehicles at bridgework locations along the project.
- Be alert for intermittent, traffic pacing operations northbound near Oakridge Road, midnight to 5 a.m., Monday, October 8 through Thursday, October 11 for bridge beam setting operations;
- The Interstate 4 Westbound on-ramp from the Turnpike will be closed from 10 p.m. to 6 a.m., Monday, October 8 for paving operations. Motorists will follow the detour below:



- Single lane closures on Orange Blossom Trail (US 17/92/441), both north- and southbound for bridge work.

**PROJECT DESCRIPTION:** This \$77.5 million project adds two lanes in each direction to the Turnpike between Toll 528 and Interstate 4. Reconstruction and widening of the Shingle Creek Bridge, the overpasses at Toll 528, Orange Blossom Trail (US 17/92/441), Oak Ridge Road, Sand Lake Road and the Interstate 4 ramps is also included in this project. This Turnpike widening project is scheduled to be complete in September 2008. The project includes setting barrier wall and installing asphalt to accommodate temporary travel lanes during construction as well as activities associated with demolition work and new construction on Shingle Creek Bridge. Construction activities will occur behind barrier wall. There are no lane closures currently scheduled during the day. Motorists should exercise caution while traveling in the area, and watch for construction vehicles entering and exiting the work zone.

#### TURNPIKE WIDENING PROJECT-I-4 TO GOTHA ROAD (MILEPOSTS 259-265)

- Currently, most work is concentrated between the Kirkman Road overpass and the Turkey Lake Service Plaza.
- Motorists should be alert for overnight, outside lane closures northbound between Kirkman Road and the Turkey Lake Service Plaza, 10 p.m. to 5 a.m., Sunday, October 7 and 9 p.m. to 5 a.m., Monday, October 8 to Friday, October 12.
- Be alert for lane shifts in both directions between Interstate 4 and the Turkey Lake Service Plaza.

**PROJECT DESCRIPTION:** This \$128.6 million project adds two lanes in each direction between Interstate 4 and the SR 408 Interchange. Construction includes widening the existing bridges over Interstate 4 and Apopka-Vineland Road, and replacing the Kirkman Road and Gotha Road bridges over the Turnpike. Additionally, improvements will be made at the Interstate 4 and SR 408 (East-West Expressway) interchanges. This project is scheduled to be complete in August 2010.

## **Beachline West Expressway**

### **BEELINE WEST TOLL PLAZA RECONSTRUCTION, ITS INSTALLATION PROJECT AND ROADWAY RESURFACING (Mileposts 0-6)**

- Motorists should be alert for overnight ramp closures at International Drive, 9 p.m. to 6 a.m., Sunday, October 7 through Friday, October 12, as follows:
  - International Drive to westbound Beachline
  - International Drive to eastbound Beachline
  - Motorists should detour onto Central Florida Parkway and re-enter the Beachline at Orangewood Boulevard

**PROJECT DESCRIPTION:** Florida's Turnpike Enterprise has begun a \$10 million project to reconstruct the Bee Line West Mainline Toll Plaza near Milepost 6, part of a series of enhancements scheduled to begin within the next two years.

The current project consists of the demolition and reconstruction of the existing mainline plaza with major capacity improvements and additional lanes. Upon completion in the spring of 2009, the plaza will feature two SunPass-only express lanes in each direction, with the capacity to add an additional lane when the Beachline is widened to three lanes in each direction. SunPass customers will be able to travel at highway speed in the express lanes.

Included in the toll plaza improvements is the construction of four mixed-use lanes to provide additional lanes for cash customers.

## **Regional Projects**

### **POLK COUNTY**

#### **TOLL ROAD 570—THE POLK PARKWAY**

- Motorists should be alert for daily, single lane closures, both east- and westbound, between Interstate 4 (Milepost 0) and Old Dixie Highway (Milepost 18)) between 9 a.m. and 5 p.m. The permanent lane closures behind concrete barrier wall accommodate full-depth base reconstruction. This is a moving operation, shifting to inside and outside lanes, throughout the length of the project
- Motorists should be alert for the following ramp closures:
  - Waring Road eastbound on-ramp—Tuesday, October 9;
  - Airport Road westbound off-ramp—Tuesday, October 9;
  - Partial lane closure (inside lane only), South Florida Avenue westbound on ramp—Tuesday, October 9. (Toll Plaza operations are not affected.)
- Reduced speed limits remain in effect in the construction zone and will be strictly enforced.

**PROJECT DESCRIPTION:** Work has begun on a \$22 million resurfacing project. The project includes milling and resurfacing portions of the roadway including the ramps and toll plaza lanes, reconstruction of the roadway base in some areas, and widening some roadway shoulders. The project also includes the installation of median guardrail and the construction of emergency vehicle median turnarounds. Most work will occur Monday through Friday during daylight hours; however, occasional work on Saturdays may be necessary. This project is scheduled for completion in February 2008. For more information, visit <http://www.polkparkwayconstruction.com>.



Florida's Turnpike Enterprise, part of the Florida Department of Transportation, oversees a 454-mile system of limited-access toll highways: the Florida's Turnpike, extending north from Homestead in Miami-Dade County to Wildwood in Sumter County, the Seminole Expressway and Southern Connector (Toll 417) in Seminole, Orange and Osceola counties, the Beachline Expressway West (Toll 528) in Orange County, the Polk Parkway (Toll 570) in Polk County, the Veterans Expressway and Suncoast Parkway in Hillsborough, Pasco and Hernando counties (Toll 589), the Sawgrass Expressway (Toll 869) in Broward County, and the Daniel Webster Western Beltway (Toll 429) in Orange and Osceola Counties.

SunPass is the Florida Department of Transportation's innovative Prepaid Toll Program. SunPass may be used on Florida's toll roads and most toll bridges. For information on SunPass®, please contact 1-888-TOLL-FLA (865-5352).

Travelers on the Florida's Turnpike system of roads may view real-time traffic information by visiting our website at <http://www.floridasturnpike.com>. While traveling in the Orlando, South Florida and Tampa Bay regions, motorists should dial 511 for real-time regional traffic information on the Turnpike and other major roads. This information system is voice-activated; motorists should speak the name of the road they wish to use. They may also visit <http://www.fl511.com> for information. This free service of the Florida Department of Transportation is available 24/7.