

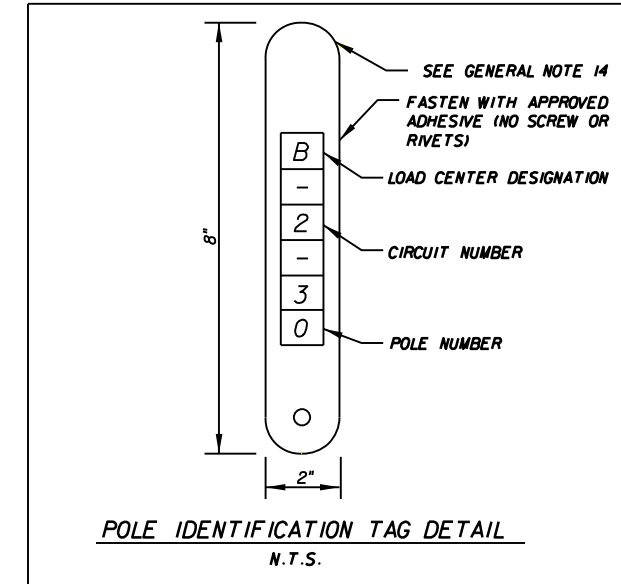
GENERAL NOTES

1. SPARE CONDUIT AT MAINLINE AND ARTERIAL ROAD PAVEMENT CROSSINGS SHALL BE CAPPED AT BOTH ENDS.
2. CONTRACTOR SHALL SUBMIT POINT-TO-POINT LUMINAIRE PHOTOMETRICS FOR ALTERNATIVE LUMINAIRES PROPOSED.
3. UTILITY OWNERS:
NOTE TO DESIGNERS
LIST ALL UTILITY OWNERS AFFECTED BY THIS PROJECT PER EXAMPLE BELOW:
MRS. JEANNIE A. TALHOUK. FLORIDA POWER CORP: 4121 ST. LAWRENCE DRIVE.
NEW PORT RICHEY, FL 34653 (813) 372-5102.
4. THE LOCATIONS OF EXISTING UTILITIES AS SHOWN ON THESE PLANS ARE APPROXIMATE AND BASED ON THE INFORMATION FURNISHED TO THE ENGINEER BY THE UTILITY OWNER(S) AND ARE SHOWN AS NOTICE TO THE CONTRACTOR THAT UNDERGROUND UTILITIES EXIST. BEFORE EXCAVATING, NOTIFY THE UTILITY COMPANY OWNER(S) AND REQUEST THEM TO LOCATE AND STAKE THEIR UNDERGROUND FACILITIES. UTILITIES ARE TO BE ADJUSTED BY OTHERS AS DIRECTED BY THE ENGINEER.
5. PROVIDE NOTICE TO THE UTILITY OWNER(S) BEFORE EXCAVATION, NOTICE TO BE GIVEN TO THE UTILITY OWNER A MINIMUM OF TWO (2) DAYS, EXCLUDING SATURDAY, SUNDAY AND LEGAL HOLIDAYS. NOT ALL UTILITY COMPANIES ARE MEMBERS OF "SUNSHINE" (1-800-432-4770). WWW.SUNSHINE811.COM. THE FLORIDA TURNPIKE ENTERPRISE IS NOT A MEMBER OF SUNSHINE ONE CALL.
6. THE LOCATION OF THE POLES, CONDUCTORS, CONDUITS, JUNCTION BOXES AND SERVICE POLES ARE DIAGRAMMATIC ONLY AND MAY BE SHIFTED BY THE ENGINEER TO ACCOMMODATE LOCAL CONDITIONS AND EXISTING UTILITY LOCATIONS.
7. FOR ALTERNATIVE PROPOSED LUMINAIRES, SUBMITTAL DATA SHALL INCLUDE COMPUTER PRINTOUTS SHOWING POINT-TO-POINT HORIZONTAL FOOT-CANDLE LEVELS TO BE OBTAINED ON THIS PROJECT. LIGHTING DESIGN ANALYSIS REPORT SHALL BE USED, IF NO ALTERNATIVE LUMINAIRES ARE PROPOSED. AT FINAL INSPECTION, THE CONTRACTOR SHALL VERIFY THE HORIZONTAL FOOT-CANDLE LEVELS ON THE ROADWAY WITH AN APPROVED AND PROPERLY CALIBRATED LIGHT METER.
8. ALL ELECTRICAL WORK SHALL MEET ALL REQUIREMENTS OF THE LATEST ADOPTED EDITIONS OF THE NATIONAL ELECTRICAL CODE, THE NATIONAL ELECTRICAL SAFETY CODE, AND THE STATE OF FLORIDA D.O.T. STANDARD SPECIFICATIONS FOR ROAD AND BRIDGE CONSTRUCTION. ALL COMPONENTS SHALL BE PROPERLY GROUNDED AND BONDED PER N.E.C. REQUIREMENTS.
9. INSTALL SURGE PROTECTIVE DEVICES. PROPERLY GROUNDED IN POWER (SECONDARY) ENTRANCES.
10. IN ACCORDANCE WITH N.E.C., IDENTIFY ALL CIRCUITS AND EQUIPMENT WITH "LAMACOID TAGS". INSTALL SIMILAR TAGS OF STAINLESS STEEL, IDENTIFYING CIRCUIT FOR EACH LUMINAIRE AT ACCESS HANDHOLE FOR EACH POLE.
11. NOTIFY _____ (POWER COMPANY'S NAME) _____ AT LEAST 48 HOURS PRIOR TO ANY INSTALLATION THAT IS WITHIN 10 FEET OF ENERGIZED ELECTRICAL CONDUCTORS. _____ (POWER COMPANY'S NAME) _____, AT IT'S OPTION, SHALL ASSIST THE F.D.O.T. CONTRACTOR TO COVER UP ENERGIZED CONDUCTORS AT INSTALLATION SITE OR TAKE OTHER SAFETY PRECAUTIONS AS NECESSARY. EXTREME CAUTION SHALL BE EXERCISED AT ALL TIMES IN PERFORMANCE OF WORK AROUND THE PRIMARY, HIGH VOLTAGE COMPONENTS.
12. PULLING INSTRUCTIONS: CONNECT PULLING DEVICES TO COPPER WIRE AND NOT TO JACKET AND MEET MANUFACTURER'S REQUIREMENTS. USE PULLING COMPOUND PER MANUFACTURER'S REQUIREMENTS. ALL BENDS SHALL NOT BE LESS THAN RECOMMENDED BY N.E.C. OR N.E.S.C. FOR CABLE USED. PULL CABLE SHALL BE POLYESTER. STEEL CABLE OR FISH TAPES NOT ALLOWED.
13. STAKE ALL POLE LOCATIONS AND REQUEST UTILITY COMPANIES TO LOCATE AND STAKE UNDERGROUND UTILITIES PRIOR TO EXCAVATING.
14. ALL ROADWAY LIGHTING AND ILLUMINATED OVERHEAD SIGNS SHALL HAVE AN IDENTIFICATION TAG. TAGS SHALL BE 2" x 8" IN SIZE WITH BLACK LETTERS ON YELLOW BACKGROUND ATTACHED WITH APPROVED ADHESIVE (NO RIVETS OR SCREWS). COST OF TAGS SHALL BE INCLUDED IN THE BID ITEMS FOR LIGHT POLE COMPLETE. TAGS SHALL BE PLACED 5 FEET ABOVE GRADE AND FACING THE ROADWAY. BEFORE ORDERING TAGS, COORDINATE WITH TURNPIKE ROADWAY MAINTENANCE FOR PROPER NUMBERING SEQUENCE OF LOAD CENTER AND CIRCUITS.
15. ALL CONDUITS UNDER ROADWAY (AND/OR SIDEWALK) SHALL BE INSTALLED PRIOR TO INSTALLATION OF ROADWAY BASE AND SURFACE (OR CONCRETE), EXCEPT WHERE OTHERWISE SPECIFIED IN THE PLANS.
16. JACK AND BORE OPERATIONS IF USED SHALL MEET THE REQUIREMENTS OF F.D.O.T.'S UTILITY ACCOMMODATION GUIDE. (LATEST EDITION).
17. AT LOCATIONS WHERE UNDERGROUND UTILITIES ARE IN CLOSE PROXIMITY TO THE LIGHTING POLE FOUNDATIONS OR CONDUIT RUN, AS DETERMINED BY THE ENGINEER, HAND DIG THE FIRST 4 FEET OF THE HOLE FOR THE POLE FOUNDATION AND CONDUIT RUN.
18. THE CONTRACTOR'S ATTENTION IS DIRECTED TO THE PROVISIONS THAT REQUIRES THE PREPARATION AND APPROVAL OF AN EROSION CONTROL PLAN THAT ADDRESSES PREVENTION CONTROL AND ABATEMENT OF WATER POLLUTION. THE COST OF PREPARING AN EROSION CONTROL PLAN IS INCLUDED IN ITEM _____.
19. ALL CONDUIT TRENCHES SHALL BE BACKFILLED COMPLETELY TO PROVIDE SAFE CROSSING BY THE END OF EACH WORKING DAY OR WHENEVER THE WORK ZONE BECOMES INACTIVE. DO NOT OPEN ANY AREA THAT CAN NOT BE BACKFILLED IN THE SAME DAY/NIGHT OPERATION.
20. ALL EXCESS DIRT AND DEBRIS EXCAVATED FROM POLE FOUNDATIONS SHALL BE REMOVED DAILY TO AREAS APPROVED BY THE ENGINEER AND PAID FOR INCIDENTAL TO LIGHT POLE INSTALLATION.

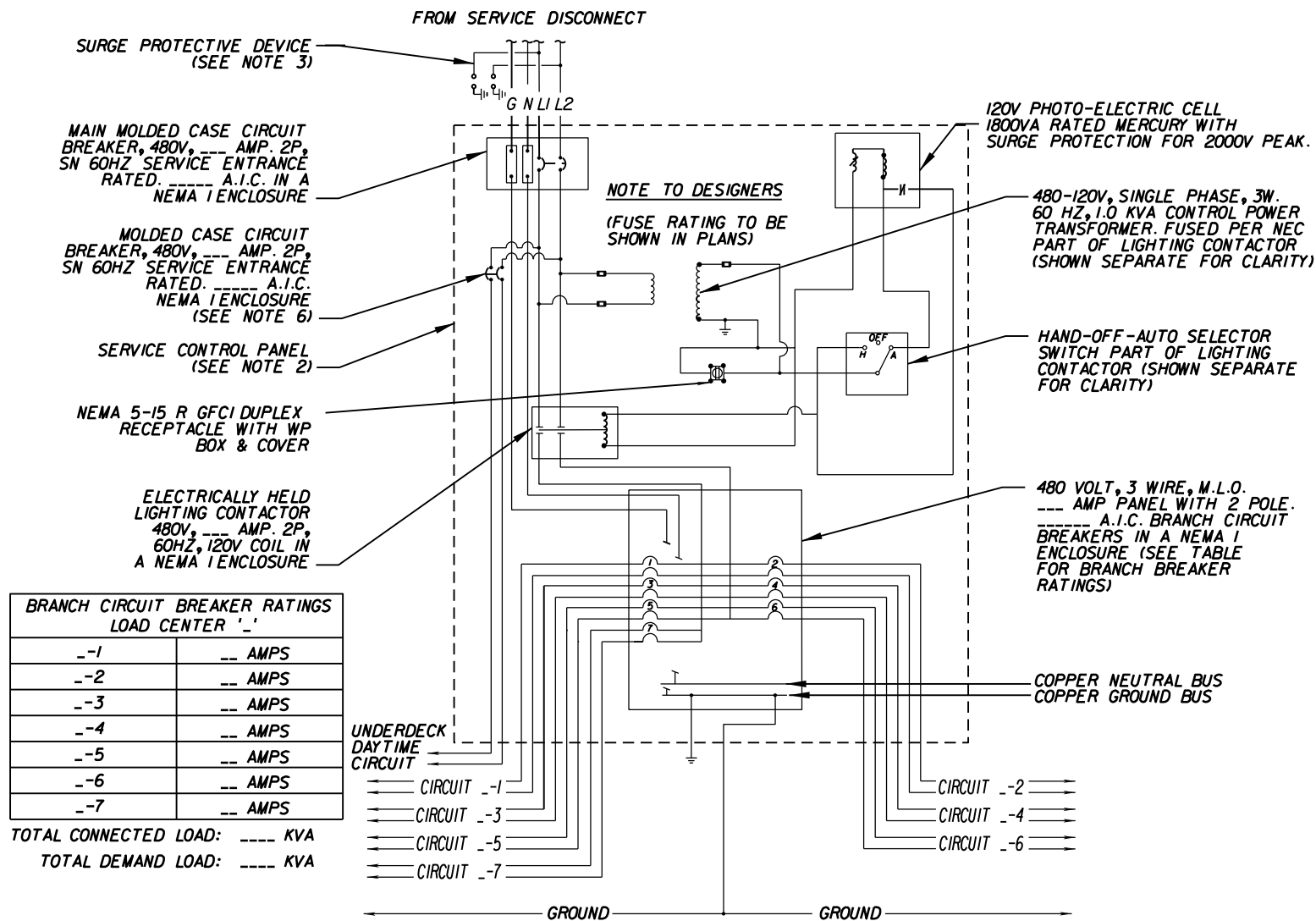
21. MAINTAIN ACCESS TO ALL SIDE STREETS, PRIVATE AND COMMERCIAL DRIVEWAYS AT ALL TIMES DURING THE CONSTRUCTION OPERATION.
22. THE LIGHTING SYSTEM WILL BE MAINTAINED BY _____ UPON FINAL ACCEPTANCE.
23. UPON FINAL ACCEPTANCE OF THE PROJECT, THE ENGINEER SHALL FORWARD A COMPLETE SET OF AS-BUILT PLANS WITH ALL CHANGES MARKED IN RED TO THE ATTENTION OF: _____ MAINTENANCE ENGINEER: _____ (ADDRESS).
24. ANY EXISTING SIGNALIZATION LOOPS SYSTEM DAMAGED DURING THE CONDUIT INSTALLATION SHALL BE REPAIRED. THE COST SHALL BE INCIDENTAL.
25. WHEN THE SOIL IS EXPOSED, PREPARE TEMPORARY STABILIZATION AS SOON AS PRACTICABLE. BUT IN NO CASE SHALL THE TIME BE GREATER THAN SEVEN (7) CALENDAR DAYS.
26. EXISTING LIGHTING EQUIPMENT POWER SOURCES SHALL BE VERIFIED BY THE CONTRACTOR PRIOR TO COMMENCING DEMOLITION/REMOVAL WORK.
27. ALL PULL BOXES AND COVERS SHALL BE LOAD RATED TIER 22. ALL PULL BOX COVERS SHALL BE MARKED "TPK LIGHTING" FOR FTE LIGHTING FACILITIES.
28. REFERENCE THE BRIDGE STRUCTURAL PLANS FOR THE EMBEDDED ELECTRICAL ITEMS: CONDUIT. PULL BOX, JUNCTION BOX AND THEIR LOCATIONS.
29. CONDUIT LOCATIONS AS SHOWN ON THE PLANS ARE APPROXIMATE. CONDUIT MUST BE PLACED WITHIN THE RIGHT-OF WAY BUT CAN BE ADJUSTED TO FIT AROUND THE EXISTING AND PROPOSED UTILITIES. WHERE PLANNED LOCATION OF LIGHTING CONDUIT RUNNING 30" UNDER PAVEMENT IS FOUND TO CONFLICT WITH UNDERGROUND UTILITIES, THE LIGHTING CONDUIT POSITION SHALL BE ALTERED VERTICALLY OR HORIZONTALLY TO AVOID THE CONFLICT AS RECOMMENDED BY THE CONTRACTOR AND APPROVED BY THE ENGINEER. A 24" ABSOLUTE MINIMUM DEPTH SHALL BE MAINTAINED WHERE LIGHTING CONDUITS ARE RELOCATED CLOSER THAN 30" BELOW THE GROUND SURFACE AND SHALL BE PLACED IN AN ADDITIONAL 3" PVC SLEEVE OR BACKFILLED WITH A MIN. OF 4"x4" OF CONCRETE. COST OF SUCH TREATMENT WILL BE INCIDENTAL TO PAY ITEMS PROVIDED.
30. ALL SPLICES SHALL BE MADE IN PULL BOXES ONLY.
31. SPLICES AND CONNECTIONS MADE IN PULL BOXES SHALL BE LIMITED TO THE SERVICE POINT AND CONDUIT JUNCTION WITH MULTI-DIRECTIONAL CONDUITS AS INDICATED ON PLANS. THE CONNECTION MADE AT THESE POINTS SHALL BE MADE PER FDOT SPECIFICATIONS.
32. INSPECT ALIGNMENT OF EACH INDIVIDUAL POLE AND FIXTURE AS FOLLOWS:
33. POLE ALIGNMENT: WITHIN ONE HALF DEGREE ON VERTICAL +/- CONFIRM VERTICAL ALIGNMENT. VIEWING FROM ADJACENT SERIES OF POLES. IN BOTH DIRECTIONS.
34. FIXTURE ALIGNMENT: WITHIN ONE DEGREE OF HORIZONTAL +/- USING CALIBRATED LEVEL ALONG BOTH AXES OF CUT-OFF FIXTURE FACE, WITH LENS ONLY. NO FIXTURE REFRACTOR SHALL BE USED.
35. ALL CONDUITS SHALL BE MANDREL TESTED AND CLEANED. CONDUITS PLACED FOR FUTURE USE SHALL HAVE 3/4" POLYESTER CORD PULLED IN PLACE AND CAPPED WITH NOTATION INSIDE CONDUIT AS TO LOCATION OF OPPOSITE END. PLACE DUCT MARKER OR PULL BOXES TO MARK ENDS OF EMPTY CONDUITS.
36. ALL LIGHT POLES, PULL BOXES AND LOAD CENTERS SHALL NOT BE INSTALLED WITHIN ANY AREAS (I.E. DITCHES, ETC.) THAT MAY CAUSE WATER INTRUSION.
37. AS PART OF THE 7 DAY TEST BURNING PERIOD, EACH CIRCUIT SHALL BE LABELED WITH THE LOAD AMPERAGE READING AT THE LOAD CENTER PANEL.
38. A LABEL SHALL BE PROVIDED ON POLES WITH OBSTRUCTION LIGHTS TO INDICATE THAT TWO SEPARATE VOLTAGES ARE PROVIDED AND INSTALLED WITHIN THE LIGHT POLES. ALSO INDICATE THAT THE 120 VOLT CIRCUIT IS "HOT" 24 HOURS A DAY. THE LABEL SHALL BE SUBMITTED TO THE PROJECT ENGINEER FOR APPROVAL OF THE WORDING AND PLACEMENT LOCATION.
39. THE CONTRACTOR SHALL REMOVE ALL OUT OF SERVICE ROADWAY LIGHTING SYSTEM COMPONENTS INCLUDING UNDERGROUND AND SURFACE MOUNT CONDUITS, CONDUCTORS, POLE BASES, POLES, PULL BOXES, SERVICE POINTS, LOAD CENTERS, AND ALL OTHER ANCILLARY COMPONENTS RELATED TO THE LIGHTING SYSTEM NOTED IN THE PLANS.
40. ON REMOVED SIGN STRUCTURES, THE CONTRACTOR SHALL REMOVE ALL ASSOCIATED WIRING FROM THE PULL BOX TO THE SIGN STRUCTURE, AND RE-SPLICE CONDUCTORS AS NEEDED.
41. THE CONTRACTOR MUST REFERENCE THE SIGNING AND PAVEMENT MARKING PLANS FOR THE COST OF INSTALLATION, REMOVAL, AND MODIFICATIONS OF THE SIGN LIGHTING SYSTEMS AND ALL ANCILLARY COMPONENTS ASSOCIATED WITH SIGN LIGHTING.
42. PAY ITEMS NOTES TO BE PLACED ON THE FIRST TABULATION OF QUANTITIES SHEET, AS NEEDED. SEE DESCRIPTIONS IN FDOT BASIS OF ESTIMATES FOR ADDITIONAL INFORMATION.

NOTE TO DESIGNERS

1. REMOVE, EDIT OR ADD GENERAL NOTES AS NECESSARY TO ASSURE COMPATIBILITY WITH YOUR PARTICULAR PROJECT.
2. ADD ADDITIONAL PAY ITEM NOTES FOR ITEMS THAT ARE NOT COVERED BY THE STANDARDS.



REVISIONS				STATE OF FLORIDA DEPARTMENT OF TRANSPORTATION			PAY ITEM AND GENERAL NOTE SHEET ROADWAY LIGHTING DESIGN	SHEET NO. 201 (1 OF 1)
DATE	DESCRIPTION	DATE	DESCRIPTION	ROAD NO.	COUNTY	FINANCIAL PROJECT ID		
						- - -		

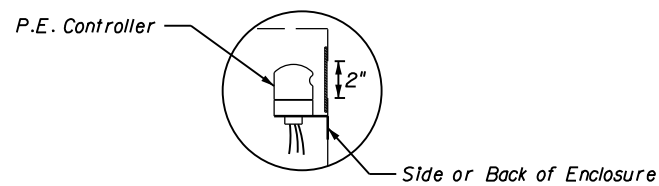


NOTES:

1. ALL WIRING INSIDE SERVICE CONTROL PANEL SHALL BE INSTALLED IN INTERMEDIATE METAL CONDUIT.
2. CONTRACTOR SHALL FURNISH ENCLOSURE SIZED FOR THE EQUIPMENT (SEE ENCLOSURE DETAIL THIS SHEET).
3. SURGE PROTECTIVE DEVICE (SPD): SPD UNIT SHALL BE WIRED INSIDE THE ENCLOSURE AS PER FDOT PLANS, INDEX 639-001. SPD UNIT SHALL BE MOUNTED ON THE OUTSIDE OF THE ENCLOSURE AND COMPLY WITH UL 1449 LATEST ADOPTED EDITION.
4. SHOP DRAWINGS REQUIRED FOR ALL EQUIPMENT ASSOCIATED WITH THE LOAD CENTER.
5. LOAD CENTER/SERVICE POINTS SHALL BE PROVIDED WITH A MINIMUM OF 20% SPARE CAPACITY.
6. BREAKER AND WIRING INSTALLED WHEN DAYTIME LIGHTING CIRCUIT IS REQUIRED.

LOAD CENTER SCHEMATIC DIAGRAM

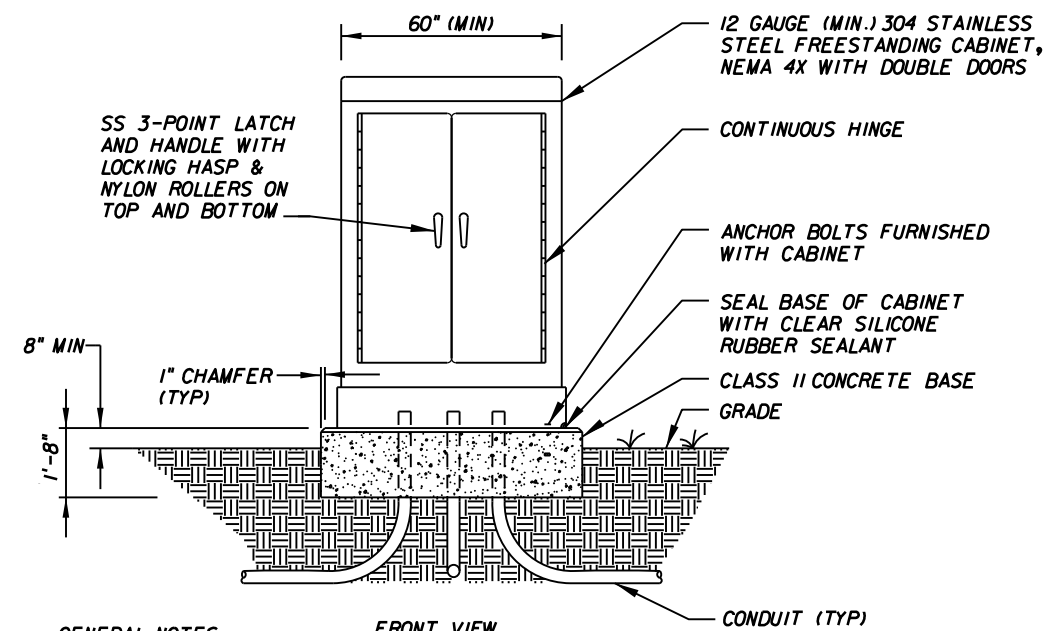
N.T.S.



CUT A 2" HOLE IN THE SIDE OF THE LIGHTING CONTROL PANEL ENCLOSURE FOR THE OPERATION AND MOUNTING OF THE P.E. CONTROLLER. USE PLEXIGLASS AND A CLEAR SILICONE SEALANT TO COVER HOLE, INSTALL P.E. CONTROLLER.

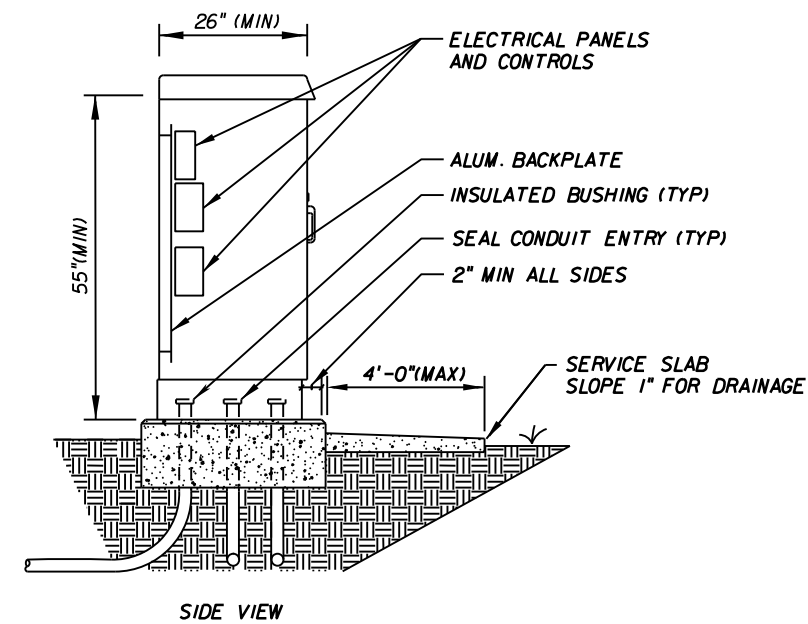
PHOTO ELECTRIC CONTROLLER DETAIL

N.T.S.



GENERAL NOTES

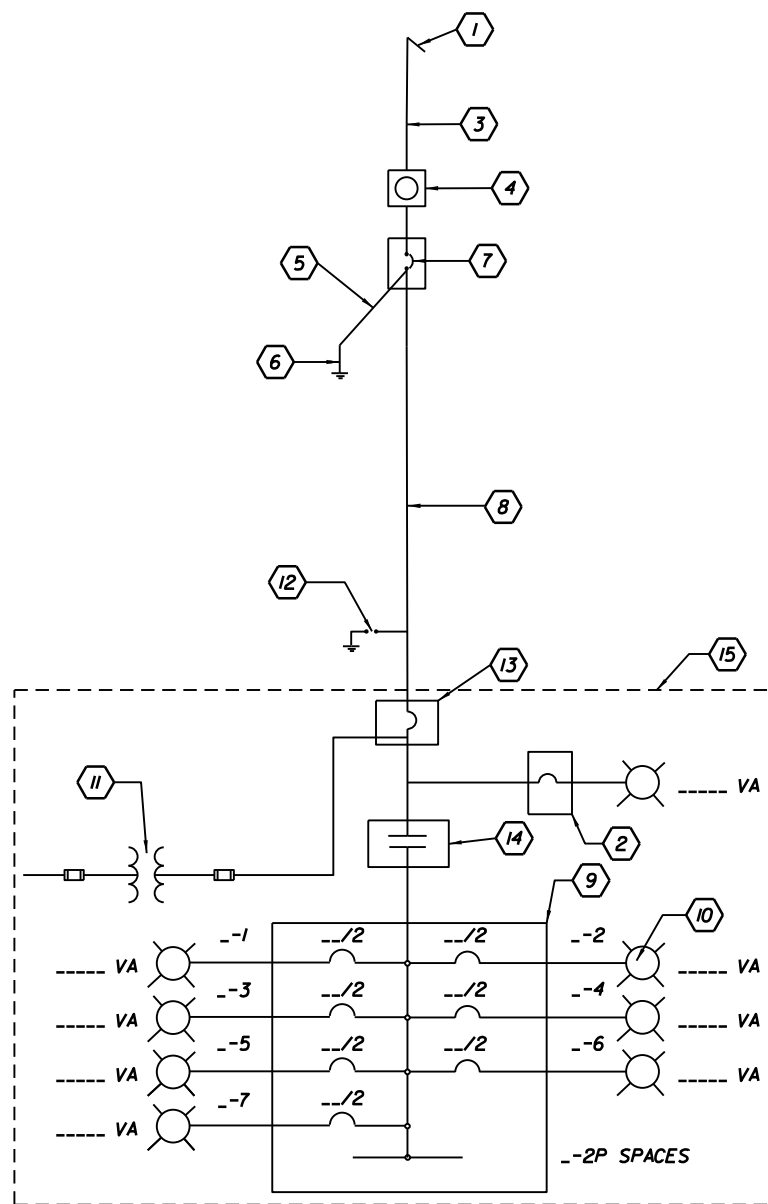
1. CABINET SHALL BE GROUNDED PER NEC AND FDOT STANDARD PLANS AND DETAILED IN THE PLANS.
2. STUB-OUT ONE (1) SPARE 2" PVC CONDUIT BELOW GRADE AND BEYOND CONCRETE BASE. CAP ENDS AND INDICATE LOCATION OF STUB-OUT INSIDE CABINET



LOAD CENTER ENCLOSURE DETAIL

N.T.S.

REVISIONS				STATE OF FLORIDA DEPARTMENT OF TRANSPORTATION			SHEET NO.
DATE	DESCRIPTION	DATE	DESCRIPTION	ROAD NO.	COUNTY	FINANCIAL PROJECT ID	
							202 (1 OF 2)

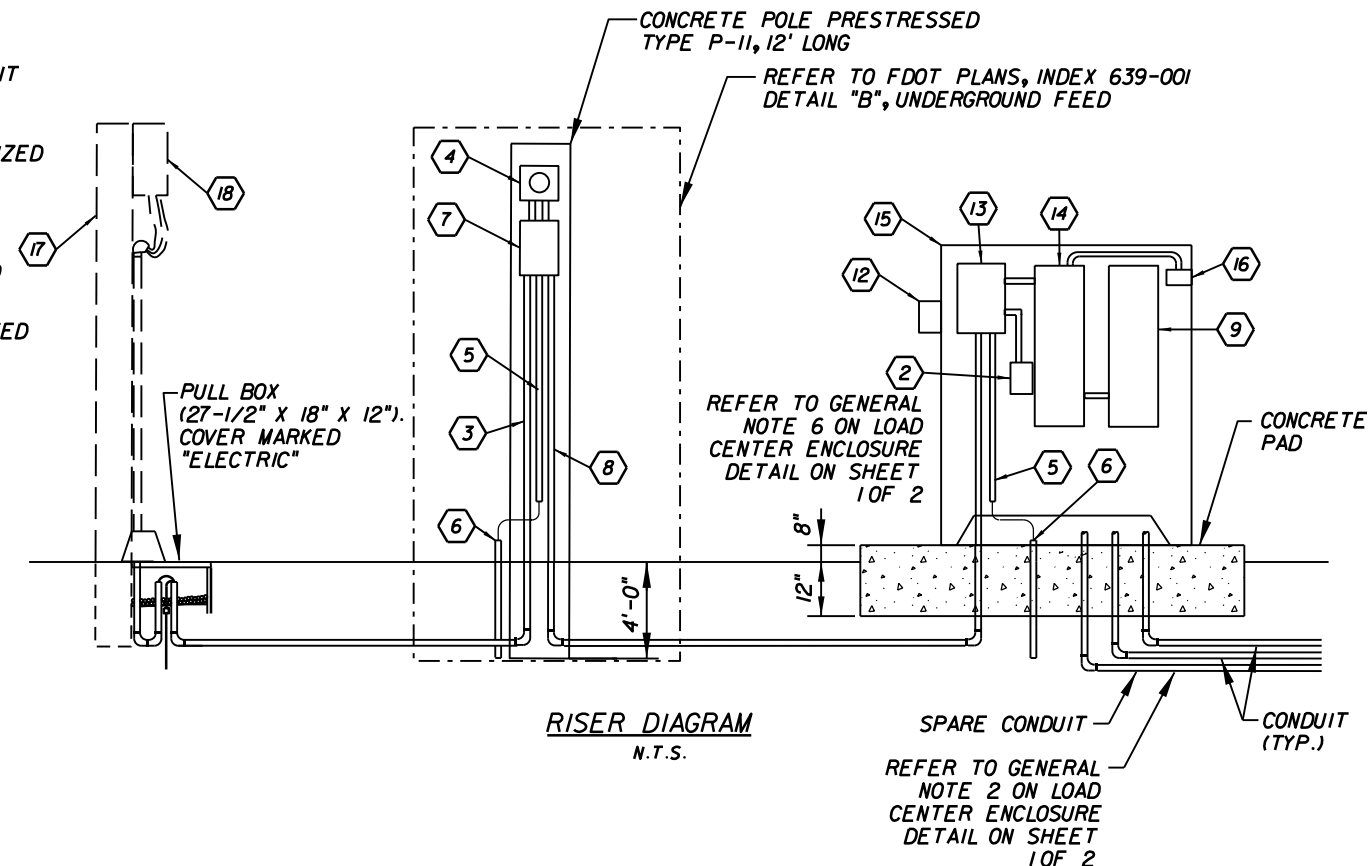


TOTAL CONNECTED LOAD: ____ KVA
 TOTAL DEMAND LOAD: ____ KVA

ONE LINE DIAGRAM
 N.T.S.

KEYED NOTES

- ① 240/480 V SINGLE PHASE 3-WIRE "LIST POWER COMPANY" ELECTRIC SERVICE. SAFETY SWITCH ON SERVICE SIDE OF METER WHEN REQUIRED BY POWER COMPANY.
- ② 480V, ____AMP ENCLOSED BREAKER
- ③ 2# ____ AWG & 1# ____ AWG (N) IN ____" RIGID GALVANIZED STEEL CONDUIT
- ④ METER AS REQUIRED. HEIGHT SPECIFIED BY POWER COMPANY.
- ⑤ 1# ____ AWG INSULATED COPPER GROUND WIRE IN 1" RIGID GALVANIZED STEEL CONDUIT
- ⑥ COPPER CLAD GROUND ROD(S), MIN. 5/8" DIA. 20' LONG, 6' MIN. SEPARATION BETWEEN THEM
- ⑦ 480V ENCLOSED BREAKER NEMA 3R SERVICE ENTRANCE RATED WITH NEUTRAL AND GROUND KITS
- ⑧ 2# ____ AWG, 1# ____ AWG (N), & 1# ____ AWG (G) IN ____" RIGID GALVANIZED STEEL CONDUIT
- ⑨ PANEL BOARD, ____ AMP, 480V, SINGLE PHASE, 3-WIRE WITH CIRCUIT BREAKERS AND GROUND BAR AS INDICATED
- ⑩ ROADWAY LUMINAIRE CONNECTED TO CIRCUIT --2
- ⑪ CONTROL TRANSFORMER 1 KVA SINGLE PHASE, 480V PRIMARY 120V SECONDARY
- ⑫ SURGE PROTECTIVE DEVICE (SPD)
- ⑬ MAIN CIRCUIT BREAKER ____ AMPS, 2-POLE, 480V, ____ AIC
- ⑭ ____ AMP, 2-POLE, ELECTRICALLY HELD CONTACTOR
- ⑮ FREE STANDING NEMA 4X STAINLESS STEEL ENCLOSURE WITH TWO DOORS
- ⑯ PHOTOELECTRIC SWITCH
- ⑰ "LIST POWER COMPANY" CONCRETE SERVICE POLE
- ⑱ "LIST POWER COMPANY" TRANSFORMER



RISER DIAGRAM
 N.T.S.

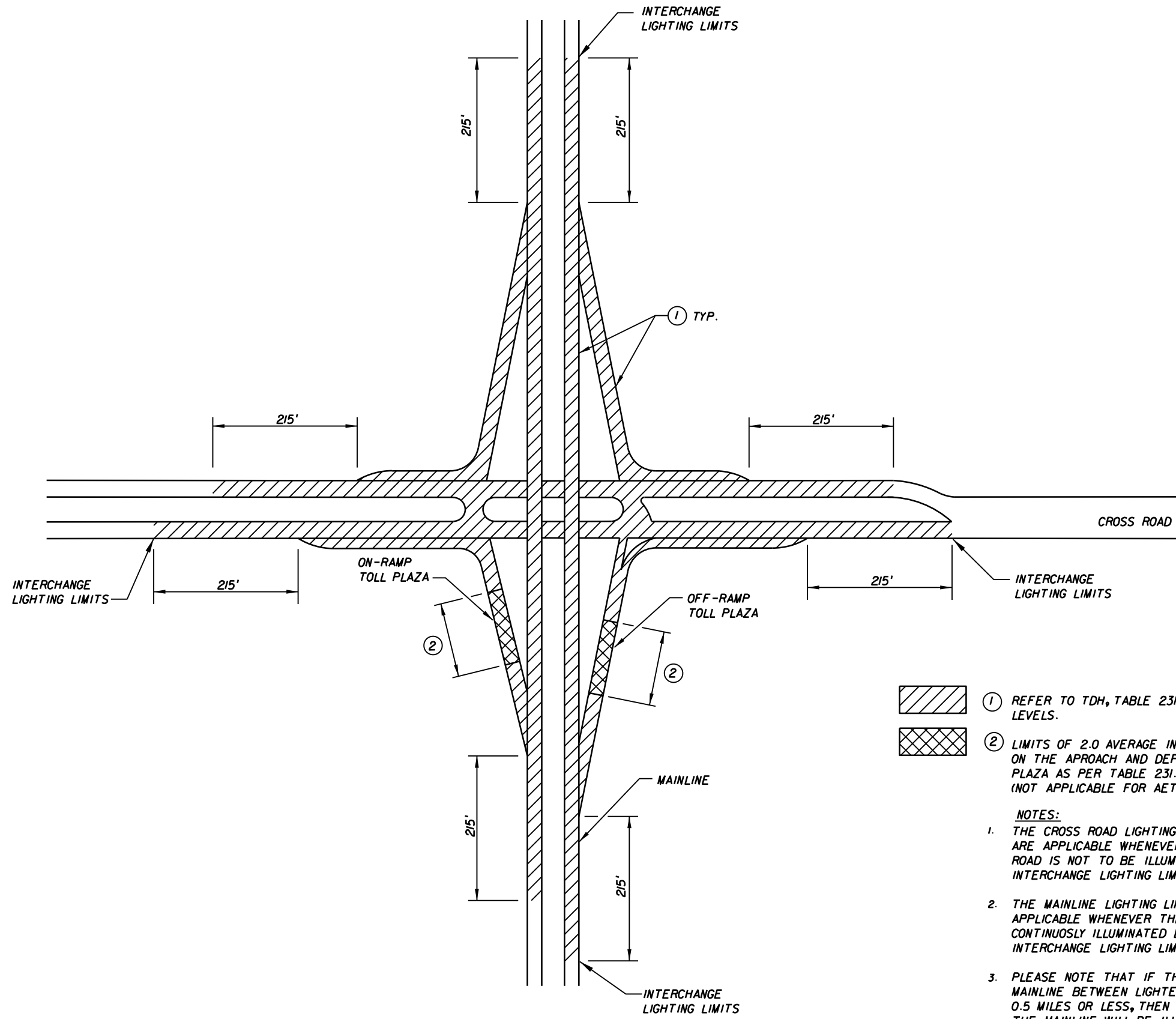
SPARE CONDUIT
 CONDUIT (TYP.)
 REFER TO GENERAL NOTE 2 ON LOAD CENTER ENCLOSURE DETAIL ON SHEET 1 OF 2

REVISIONS			
DATE	DESCRIPTION	DATE	DESCRIPTION

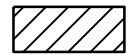
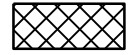
STATE OF FLORIDA DEPARTMENT OF TRANSPORTATION		
ROAD NO.	COUNTY	FINANCIAL PROJECT ID

FLORIDA TURNPIKE
SERVICE POINT DETAILS

SHEET NO.
 202
 (2 OF 2)



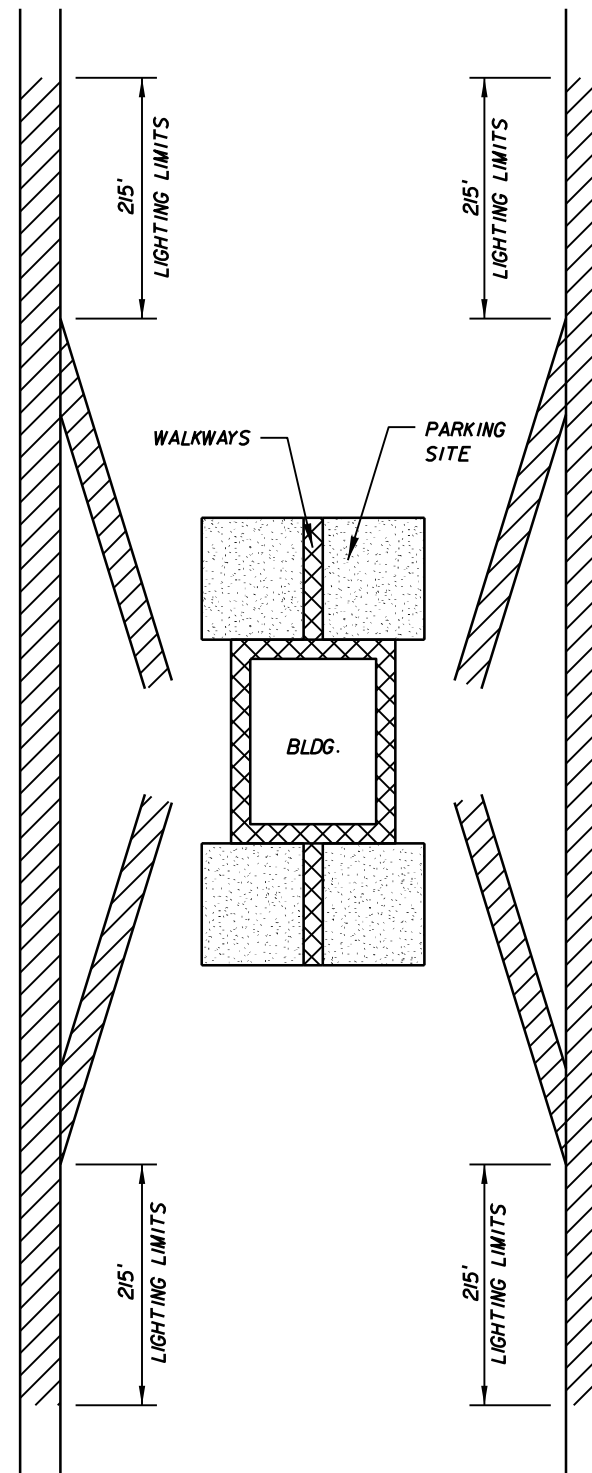
INTERCHANGE LIGHTING LIMITS
N.T.S.

-  ① REFER TO TDH, TABLE 231.2.1 FOR ILLUMINATION LEVELS.
-  ② LIMITS OF 2.0 AVERAGE INITIAL FOOT-CANDLES ON THE APPROACH AND DEPARTURE OF A RAMP TOLL PLAZA AS PER TABLE 231.2.1. (NOT APPLICABLE FOR AET ONLY PLAZAS)




NOTES:

1. THE CROSS ROAD LIGHTING LIMITS SHOWN ARE APPLICABLE WHENEVER THE CROSS ROAD IS NOT TO BE ILLUMINATED BEYOND THE INTERCHANGE LIGHTING LIMITS SHOWN.
2. THE MAINLINE LIGHTING LIMITS SHOWN ARE APPLICABLE WHENEVER THE MAINLINE IS NOT CONTINUOUSLY ILLUMINATED BEYOND THE INTERCHANGE LIGHTING LIMITS SHOWN.
3. PLEASE NOTE THAT IF THE LENGTH OF THE MAINLINE BETWEEN LIGHTED INTERCHANGES IS 0.5 MILES OR LESS, THEN THAT SECTION OF THE MAINLINE WILL BE ILLUMINATED REGARDLESS OF WHAT THAT THE LIGHTING JUSTIFICATION REPORTS INDICATES.

REVISIONS				STATE OF FLORIDA DEPARTMENT OF TRANSPORTATION			INTERCHANGE LIGHTING LIMITS	SHEET NO. 203 (1 OF 1)
DATE	DESCRIPTION	DATE	DESCRIPTION	ROAD NO.	COUNTY	FINANCIAL PROJECT ID		
						- - -		

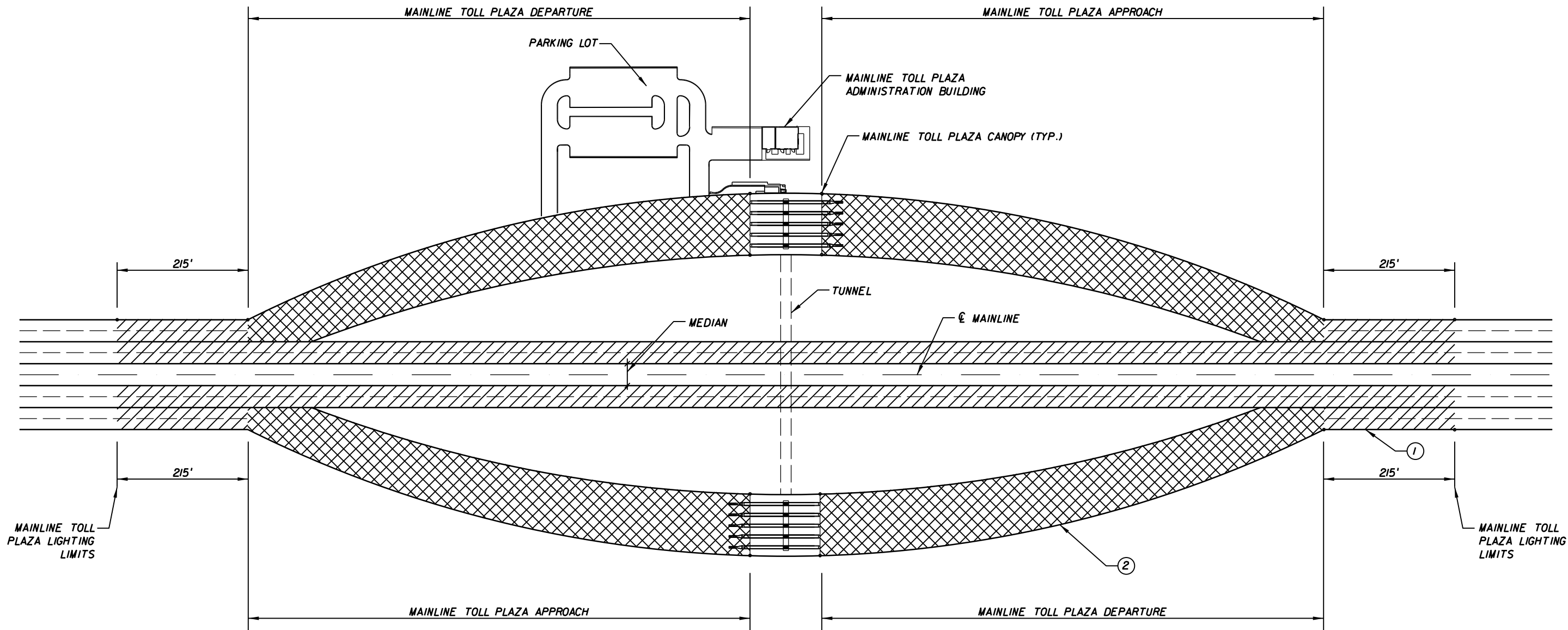


SERVICE PLAZA LIGHTING LIMITS
N.T.S.

-  PARKING LOT AND SITE: 1.5 AVERAGE INITIAL FOOT-CANDLES AS PER TDH, TABLE 231.2.1.
-  BLDG. PERIMETER AND WALKWAYS: 2.0 AVERAGE INITIAL FOOT-CANDLES AS PER TDH, TABLE 231.2.1.
-  LIMITS OF 1.7 AVERAGE INITIAL FOOT-CANDLES FOR NON-ILLUMINATED ROADWAYS

- NOTES:**
- THE MAINLINE LIGHTING LIMITS SHOWN ARE APPLICABLE WHENEVER THE MAINLINE IS NOT CONTINUOUSLY ILLUMINATED.

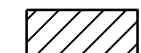

REVISIONS				STATE OF FLORIDA DEPARTMENT OF TRANSPORTATION			SHEET NO. 204 (1 OF 1)
DATE	DESCRIPTION	DATE	DESCRIPTION	ROAD NO.	COUNTY	FINANCIAL PROJECT ID	



MAINLINE TOLL PLAZA APPROACH AND DEPARTURE LIGHTING LIMITS

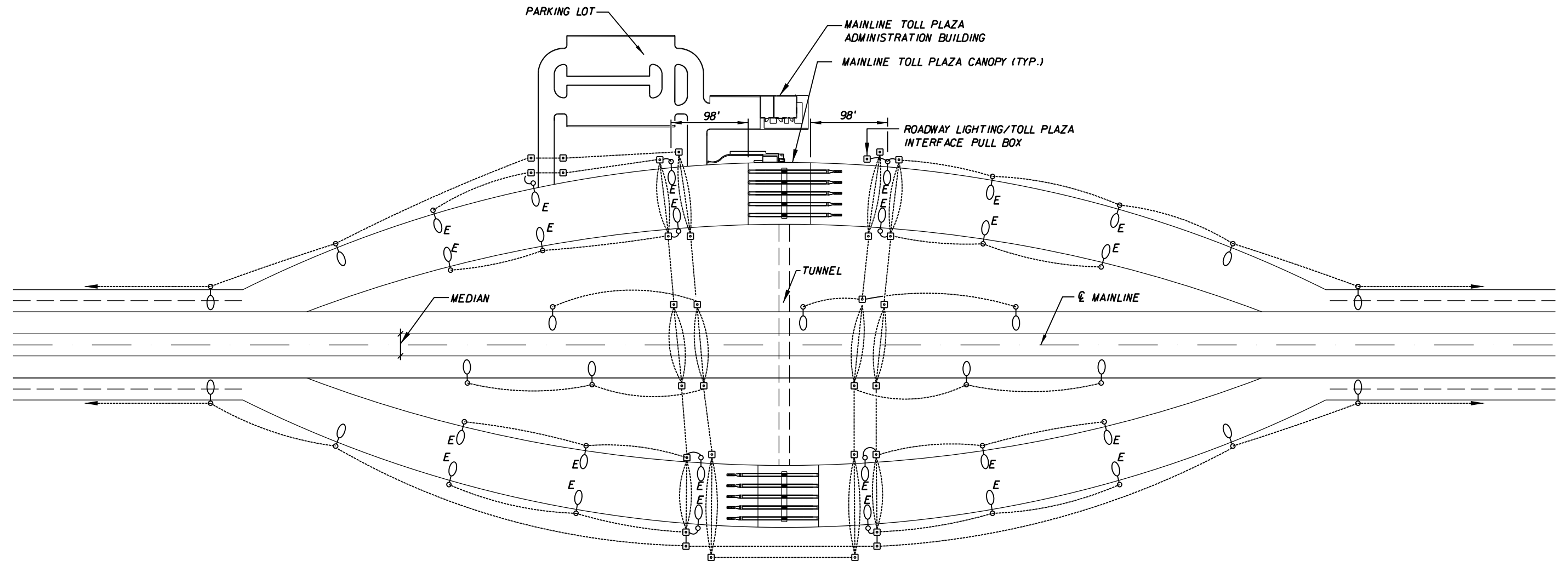
N.T.S.

FOR REFERENCE ONLY
(NOT APPLICABLE FOR AET ONLY TOLLING)

-  ① REFER TO TDH, TABLE 231.2.1 FOR MAINLINE ILLUMINATION LEVELS.
-  ② LIMITS OF 2.0 AVERAGE INITIAL FOOT-CANDLES ON THE APPROACH AND DEPARTURE OF A RAMP TOLL PLAZA, AS PER TDH, TABLE 231.2.1.

NOTES:
1. THE MAINLINE LIGHTING LIMITS SHOWN ARE APPLICABLE WHENEVER THE MAINLINE IS NOT CONTINUOUSLY ILLUMINATED.

REVISIONS				STATE OF FLORIDA DEPARTMENT OF TRANSPORTATION			MAINLINE TOLL PLAZA LIGHTING LIMITS	SHEET NO. 205 (1 OF 1)
DATE	DESCRIPTION	DATE	DESCRIPTION	ROAD NO.	COUNTY	FINANCIAL PROJECT ID		
						- - -		



LEGEND:

- ROADWAY LUMINAIRE FED FROM ROADWAY LIGHTING LOAD CENTER
- ROADWAY LUMINAIRE FED FROM PLAZA STAND-BY GENERATOR PANEL
- ROADSIDE PULL BOX
- CONDUIT, UNDERGROUND
- CONDUIT, UNDERPAVEMENT

MAINLINE TOLL PLAZA APPROACH AND DEPARTURE LIGHTING LOCATION
N.T.S.

FOR REFERENCE ONLY
(NOT APPLICABLE FOR AET ONLY TOLLING)

NOTES:

1. THE EXACT LOCATION OF THE LUMINAIRES SHALL BE AS DICTATED BY THE LIGHTING CALCULATIONS.
2. ROADWAY LIGHTING BRANCH CIRCUIT CONDUITS SHALL NOT BE INSTALLED THROUGH THE TOLL PLAZA ADMINISTRATION BUILDING/TUNNEL AREA.

REVISIONS				STATE OF FLORIDA DEPARTMENT OF TRANSPORTATION			MAINLINE TOLL PLAZA LIGHTING LOCATION	SHEET NO. 206 (1 OF 1)
DATE	DESCRIPTION	DATE	DESCRIPTION	ROAD NO.	COUNTY	FINANCIAL PROJECT ID		
						- - -		