

GENERAL NOTES

1. SPARE CONDUIT AT MAINLINE AND ARTERIAL ROAD PAVEMENT CROSSINGS SHALL BE CAPPED AT BOTH ENDS.
2. PRIOR TO ANY EQUIPMENT ORDER, SUBMIT FOR APPROVAL EQUIPMENT SPECIFICATION OR DESIGN DATA FOR ALL MATERIAL PROPOSED FOR THE PROJECT. THESE MOST SPECIFICALLY INCLUDE:
  - A) LUMINAIRE PHOTO METRICS
  - B) POLE STRENGTH CALCULATIONS
  - C) POLE FRAME QUALITY TEST
  - D) POLE SPECIFICATIONS AND BOLT CIRCLE DIAMETER
  - E) POLE SHOP DRAWINGS
  - F) LOAD CENTER ELECTRICAL EQUIPMENT
3. UTILITY OWNERS:
  - NOTE TO DESIGNERS

LIST ALL UTILITY OWNERS AFFECTED BY THIS PROJECT PER EXAMPLE BELOW:

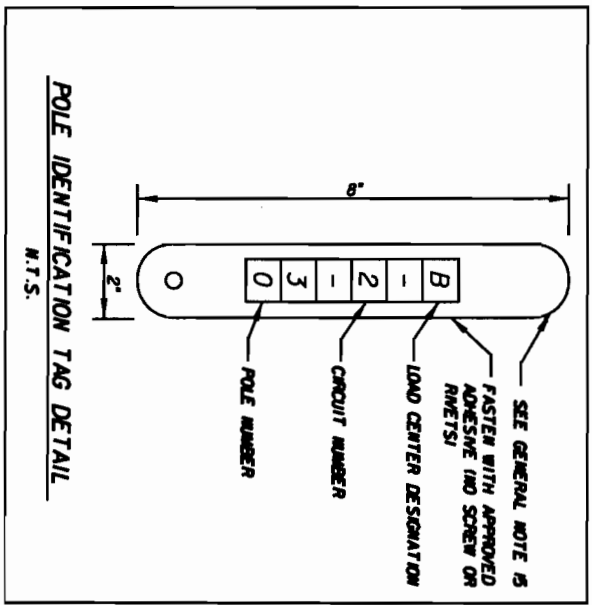
MRS. JEANNE A. TALHOK, FLORIDA POWER CORP: 409 ST. LAWRENCE DRIVE, NEW PORT RICHEY, FL 34653 (800) 372-5002.
4. THE LOCATIONS OF EXISTING UTILITIES AS SHOWN ON THESE PLANS ARE APPROXIMATE AND BASED ON THE INFORMATION FURNISHED TO THE ENGINEER BY THE UTILITY OWNERS AND ARE SHOWN AS NOTICE TO THE CONTRACTOR THAT UNDERGROUND UTILITIES EXIST. BEFORE EXCAVATING, NOTIFY THE UTILITY COMPANY OWNERS AND REQUEST THEM TO LOCATE AND STAKE THEIR UNDERGROUND FACILITIES. UTILITIES ARE TO BE ADJUSTED BY OTHERS AS DIRECTED BY THE ENGINEER.
5. PROVIDE NOTICE TO THE UTILITY OWNERS PER FLORIDA STATUTE 365.01 (800) AND 366.01 (800). THESE STATUTES REQUIRE THAT BEFORE EXCAVATION, NOTICE BE GIVEN TO THE UTILITY OWNER A MINIMUM OF TWO (2) DAYS AND A WARNING OF FIVE (5) DAYS, EXCLUDING SATURDAY, SUNDAY AND LEGAL HOLIDAYS. NOT ALL UTILITY COMPANIES ARE MEMBERS OF "SUNSHINE" CALL BY: WWW.CALLSUNSHINE.COM.
6. THE LOCATION OF THE POLES, CONDUCTORS, CONDUITS, JUNCTION BOXES AND SERVICE POLES ARE DIAGNOSTIC ONLY AND MAY BE SHIFTED BY THE ENGINEER TO ACCOMMODATE LOCAL CONDITIONS AND EXISTING UTILITY LOCATIONS.
7. ALUMINUM POLES, LUMINAIRS AND BASES SHALL BE FABRICATED IN ACCORDANCE WITH ASHOTO'S STANDARD SPECIFICATIONS FOR STRUCTURAL SUPPORTS FOR HIGHWAY SIGNS, LUMINAIRS AND TRAFFIC SIGNALS AND SHALL HAVE BEEN TESTED BY FINA-APPROVED METHODS. CERTIFICATION FOR TESTS SHALL BE SUBMITTED WITH THE SHOP DRAWINGS.
8. SUBMITTED DATA SHALL INCLUDE COMPUTER PRINTOUTS SHOWING HORIZONTAL FOOT-CANDE LEVELS TO BE OBTAINED USING THE SUBMITTED LUMINAIRS ON THIS PROJECT. AT FINAL INSPECTION THE CONTRACTOR SHALL VERIFY THE HORIZONTAL FOOT-CANDE LEVELS ON THE ROADWAY WITH AN APPROVED AND PROPERLY CALIBRATED LIGHT METER.
9. ALL ELECTRICAL WORK SHALL MEET ALL REQUIREMENTS OF THE LATEST ADOPTED EDITIONS OF THE NATIONAL ELECTRICAL CODE, THE NATIONAL ELECTRICAL SAFETY CODE, AND THE STATE OF FLORIDA D.O.T. STANDARD SPECIFICATIONS FOR ROAD AND BRIDGE CONSTRUCTION. ALL COMPONENTS SHALL BE PROPERLY GROUNDING AND BONDED PER N.E.C. REQUIREMENTS.
10. INSTALL SURGE PROTECTIVE DEVICES. PROPERLY GROUND IN POWER (SECONDARY) ENTRANCES.
11. IN ACCORDANCE WITH N.E.C., IDENTIFY ALL CIRCUITS AND EQUIPMENT WITH "LAMPED TAGS". INSTALL SIMILAR TAGS OF STAINLESS STEEL, IDENTIFYING CIRCUIT FOR EACH LUMINAIRE AT ACCESS HANDHOLE FOR EACH POLE.
12. NOTIFY "POWER COMPANY'S NAME" AT LEAST 48 HOURS PRIOR TO ANY INSTALLATION THAT IS WITHIN 10 FEET OF ENERGIZED ELECTRICAL CONDUITS. "POWER COMPANY'S NAME" AT ITS OPTION, SHALL ASSIST THE F.D.O.T. CONTRACTOR TO COVER UP ENERGIZED CONDUITS AT INSTALLATION SITE OR TAKE OTHER SAFETY PRECAUTIONS AS NECESSARY. EXTREME CAUTION SHALL BE EXERCISED AT ALL TIMES IN PERFORMANCE OF WORK AROUND THE PRIMARY, HIGH VOLTAGE COMPONENTS.
13. PULLING INSTRUCTIONS: CORRECT PULLING DEVICES TO COPPER WIRE AND NOT TO JACKET AND MEET MANUFACTURER'S REQUIREMENTS. USE PULLING COMPUND PER MANUFACTURER'S REQUIREMENTS. ALL BENDS SHALL NOT BE LESS THAN RECOMMENDED BY N.E.C. OR N.E.S.C. FOR CABLE USED.
14. STAKE ALL POLE LOCATIONS AND REQUEST UTILITY COMPANIES TO LOCATE AND STAKE UNDERGROUND UTILITIES PRIOR TO EXCAVATING.
15. ALL ROADWAY LIGHTING AND ILLUMINATED OVERHEAD SIGNS SHALL HAVE AN IDENTIFICATION TAG. TAGS SHALL BE 2" x 6" IN SIZE WITH BLACK LETTERS ON YELLOW BACKGROUND ATTACHED WITH APPROVED ADHESIVE (NO NAILS OR SCREWS). COST OF TAGS SHALL BE INCLUDED IN THE BID ITEMS FOR LIGHT POLE COMPLETE. TAGS SHALL BE PLACED 5 FEET ABOVE GRADE AND FACING THE ROADWAY, BEFORE ORDERING TAGS, COORDINATE WITH TURNPIKE ROADWAY MAINTENANCE FOR PROPER NUMBERING SEQUENCE OF LOAD CENTER AND CIRCUITS.
16. ALL CONDUITS UNDER ROADWAY (LAND/ON SIDEWALK) SHALL BE INSTALLED PRIOR TO INSTALLATION OF ROADWAY BASE AND SURFACE FOR CONCRETE, EXCEPT WHERE OTHERWISE SPECIFIED IN THE PLANS.
17. JACK AND BORE OPERATORS IF USED SHALL MEET THE REQUIREMENTS OF F.D.O.T.'S UTILITY ACCOMMODATION GUIDE: (LATEST EDITION).
18. AT LOCATIONS WHERE UNDERGROUND UTILITIES ARE IN CLOSE PROXIMITY TO THE LIGHTING POLE FOUNDATIONS OR CONDUIT RUN, AS DETERMINED BY THE ENGINEER, HAND DIG THE FIRST 4 FEET OF THE HOLE FOR THE POLE FOUNDATION AND CONDUIT RUN.
19. THE CONTRACTOR'S ATTENTION IS DIRECTED TO THE PROVISIONS THAT REQUIRE THE PREPARATION AND APPROVAL OF AN EROSION CONTROL PLAN THAT ADDRESSES PREVENTION CONTROL AND ABATEMENT OF WATER POLLUTION. THE COST OF PREPARING AN EROSION CONTROL PLAN IS INCLUDED IN ITEM \_\_\_\_\_.

20. ALL CONDUIT TRENCHES SHALL BE BACKFILLED COMPLETELY TO PROVIDE SAFE CROSSING BY THE END OF EACH WORKING DAY OR WHENEVER THE WORK ZONE BECOMES INACTIVE. DO NOT OPEN ANY AREA THAT CAN NOT BE BACKFILLED IN THE SAME DIRECTION OPERATION.
21. ALL EXCESS DIRT AND DEBRIS EXCAVATED FROM POLE FOUNDATIONS SHALL BE REMOVED DAILY TO AREAS APPROVED BY THE ENGINEER AND PAID FOR UNDER ITEM 70-548-COD
22. MAINTAIN ACCESS TO ALL SIDE STREETS, PRIVATE AND COMMERCIAL DRIVEWAYS AT ALL TIMES DURING THE CONSTRUCTION OPERATION.
23. THE LIGHTING SYSTEM WILL BE MAINTAINED BY \_\_\_\_\_ UPON FINAL ACCEPTANCE.
24. UPON FINAL ACCEPTANCE OF THE PROJECT, THE ENGINEER SHALL FORWARD A COMPLETE SET OF AS-BUILT PLANS WITH ALL CHANGES MARKED IN RED TO THE ATTENTION OF: \_\_\_\_\_ MAINTENANCE ENGINEER: \_\_\_\_\_ (ADDRESS).
25. ANY EXISTING SIGNALIZATION LOOP'S SYSTEM DAMAGED DURING THE CONDUIT INSTALLATION SHALL BE REPAIRED. THE COST SHALL BE INCIDENTAL TO ITEM NO. 70-2-48.
26. WHEN THE SOIL IS EXPOSED, PREPARE TEMPORARY STABILIZATION AS SOON AS PRACTICABLE.
27. BUT IN NO CASE SHALL THE TIME BE GREATER THAN SEVEN (7) CALENDAR DAYS.
28. EXISTING LIGHTING EQUIPMENT SOURCES SHALL BE VERIFIED BY THE CONTRACTOR PRIOR TO COMMENCING DEMOLITION/REMOVAL WORK.
29. ALL POLES MOUNTED ON BRIDGES, RETAINING WALLS OR BARRIER WALLS SHALL HAVE PULL BOXES AS SPECIFIED IN FOOT STANDARD WEXER NO. 0200.
30. ALL ROADSIDE LIGHTING PULL BOXES SHALL BE MARKED "STREET LIGHTING". ALL PULL BOX METAL COVERS SHALL BE MARKED "STREET LIGHTING" AND SHALL BE PROVIDED WITH A GROUND LUG.
31. REFERENCE THE BRIDGE STRUCTURAL PLANS FOR THE EMBEDDED ELECTRICAL ITEMS: CONDUIT, PULL BOX, JUNCTION BOX AND THEIR LOCATIONS.
32. EXTRA CAUTION IS REQUIRED DURING THE CONSTRUCTION OF THE \_\_\_\_\_ IN THE VICINITY OF THE AIRPORT. ALL SIGNING, LIGHT STANDARDS, FENCING, LANDSCAPING, AND OTHER FEATURES MUST NOT PENETRATE THE FEDERAL AVIATION REGULATIONS (FAR) PART 77 APPROACH OR TRANSITIONAL SURFACE TO REMAIN \_\_\_\_\_ AIRPORT. THE LIMITS OF THESE SURFACES ARE SHOWN ON THE ROADWAY PLANS. THE CONTRACTOR SHALL LIMIT THE HEIGHT OF ALL CONSTRUCTION EQUIPMENT, INCLUDING CRANES AND OTHER FORMS OF ELEVATED EQUIPMENT OPERATIONS, WITHIN THE LIMITS OF THE APPROACH AND TRANSITIONAL SURFACE TO A MAXIMUM TOP ELEVATION OF \_\_\_\_\_. THE CONTRACTOR SHALL NOTIFY THE \_\_\_\_\_ AIRPORT MANAGER AT LEAST TEN DAYS PRIOR TO STARTING WORK. ALL COSTS TO BE INCLUDED IN PER ITEM 02-1.
33. CONDUIT LOCATIONS AS SHOWN ON THE PLANS ARE APPROXIMATE. CONDUIT MUST BE PLACED WITHIN THE RIGHT-OF-WAY BUT CAN BE ADJUSTED TO FIT AROUND THE EXISTING AND PROPOSED UTILITIES. WHERE PLANNED LOCATION OF LIGHTING CONDUIT RUNNING 30" UNDER PAVEMENT IS FOUND TO CONFLICT WITH UNDERGROUND UTILITIES THE LIGHTING CONDUIT POSITION SHALL BE ALTERED VERTICALLY OR HORIZONTALLY TO AVOID THE CONFLICT AS RECOMMENDED BY THE CONTRACTOR AND APPROVED BY THE ENGINEER. A 3" ABSOLUTE MINIMUM DEPTH SHALL BE MAINTAINED WHERE LIGHTING CONDUITS ARE RELOCATED CLOSER THAN 30" BELOW THE GROUND SURFACE AND SHALL BE PLACED IN AN ADDITIONAL 3" PVC SLEEVE OR BACKFILLED WITH A MIN. OF 4" OF CONCRETE. COST OF SUCH TREATMENT WILL BE INCIDENTAL TO PER ITEMS PROVIDED.
34. PREPARE ACCURATELY DIMENSIONED "AS BUILT" PLANS OF FINAL POLE CONTROLLER, CABLE AND CONDUIT LOCATIONS. PLANS SHALL BE REVIEWED AND APPROVED BY THE ENGINEER. COST OF SUCH PREPARATION SHALL BE INCIDENTAL TO PER ITEMS PROVIDED.
35. ALL SPACES SHALL BE MADE IN PULL BOXES ONLY WITH COMPRESSION SLEEVES OR SPLIT BOLT CONNECTORS, PROPERLY TAPED AND WATERPROOFED.
36. SPACES AND CONNECTIONS MADE IN PULL BOXES SHALL BE LIMITED TO THE SERVICE POINT AND CONDUIT JUNCTION WITH MULTI-DIRECTIONAL CONDUITS AS INDICATED ON PLANS. THE CONNECTION MADE AT THESE POINTS SHOULD BE PROPERLY TAPED AND HEAT SHRINK TUBES OR CAPS SHALL BE USED TO WATERPROOF THESE CONNECTIONS.
37. RESPECT ALIGNMENT OF EACH INDIVIDUAL POLE AND FUTURE AS FOLLOWS:
  37. POLE ALIGNMENT: WITHIN ONE HALF DEGREE OR VERTICAL +/- .03% CORRECTION VERTICAL ALIGNMENT. VIEWING FROM ADJACENT SERIES OF POLES, IN BOTH DIRECTIONS.
  38. FUTURE ALIGNMENT: WITHIN ONE DEGREE OF HORIZONTAL +/- .07% USING CALIBRATED LEVEL ALONG BOTH ENDS OF CUT-OFF FIXTURE FACE, WITH LENS ONLY. NO FUTURE REFRACTION SHALL BE.
  39. ALL CONDUITS SHALL BE HANDREL, TESTED AND CLEANED. CONDUITS PLACED FOR FUTURE USE SHALL HAVE 3/4" POLYESTER CONDU FILLER IN PLACE AND CAPPED WITH ROTATION INSIDE CONDUIT AS TO LOCATION OF OPPOSITE END. PLACE DUCT BARRIER ON PULL BOXES TO BARK ENDS OF EMPTY CONDUITS.
  40. TAKE RESPONSIBILITY FOR LOCATING ANY UNDERGROUND CONDUIT FOR ROADWAY LIGHTING. (PAID FOR UNDER ITEM 02-1). INCLUDED IS THE COST FOR LOCATION OF DEPARTMENT OWNED UTILITIES BY THE CONTRACTOR.
  41. ALL LIGHT POLES, PULL BOXES AND LOAD CENTERS SHALL NOT BE INSTALLED WITHIN ANY DITCH AREAS THAT MAY CAUSE WATER INTRUSION.
  42. AS PART OF THE 7 DAY TEST BURNING PERIOD, EACH CIRCUIT SHALL BE LABELED WITH THE LOAD AMPERAGE RELAYING AT THE LOAD CENTER PANEL.
  43. A LABEL SHALL BE PROVIDED ON POLES WITH OBSTRUCTION LIGHTS TO INDICATE THAT TWO SEPARATE VOLTAGES ARE PROVIDED AND INSTALLED WITHIN THE LIGHT POLES. ALSO INDICATE THAT THE 20 VOLT CIRCUIT IS "HOT" 24 HOURS A DAY. THE LABEL SHALL BE SUBMITTED TO THE PROJECT ENGINEER FOR APPROVAL OF THE WORKING AND PLACEMENT LOCATION.

- PER ITEM NOTES (TO BE PLACED ON THE FIRST TABULATION OF QUANTITIES SHEET)
1. ITEM 70-1-48: INCLUDES CONDUCTORS AS INDICATED IN THE PLANS AND DESIGN STANDARDS. DESIGN QUANTITY SHALL BE BASED ON LINEAR FEET OF SINGLE CONDUIT.
  2. ITEMS 70-2-48: INCLUDES CONDUITS, EMBOS, SHEETS, CONNECTING HARDWARE, TRENCHING AND BACKFILL AS PER THE PLANS AND DESIGN STANDARDS. THE LINEAR FOOT PRICE FOR CONDUIT SHALL ALSO INCLUDE THE COST OF RESTORING SIDEWALKS AND PAVEMENT TO THEIR ORIGINAL CONDITION. SOD SHALL BE REPLACED IN LINE KIND OF THE ADJACENT SURROUNDING.
  3. ITEM 70-7-8: INCLUDES METAL 3P SAFETY SWITCH ON LOAD SOLE OF METER, BASE MOUNTED ENCLOSURES, 40-80V CONTROL POWER TRANSFORMER, FUSES, SURGE PROTECTIVE DEVICE ON OUTSIDE OF ENCLOSURE, CONDUIT, FEEDER CONDUCTORS FROM THE POWER COMPANY POINT OF SERVICE TO THE LOAD CENTER, PULL BOX, AND ALL MISCELLANEOUS HARDWARE FOR A COMPLETE INSTALLATION AS PER PLANS AND STANDARD WEXER FROM. INCLUDES THE COST OF FURNISHING AND INSTALLING TYPE 8-8 CONCRETE POLE AND ALL FEES FOR INSPECTION OF CONNECTION OF THE ELECTRICAL SERVICE.
  4. ITEM 70-548-COD: INCLUDES THE POLE, BRACKET ANCH, LUMINAIRE WITH LAMP, ANCHOR BOLTS WITH LOCK WITS AND WASHERS, FRANGIBLE TRANSFORMER THE BASE, VENTED FOR POLES MOUNTED ON BRIDGE STRUCTURES, RETAINING WALLS OR BARRIER WALLS. WHICH SHALL HAVE NON-FRANGIBLE BASES, STANDARD FOUNDATION, OR SPECIAL FOUNDATION FOR INDICATED POLES. SODDING AROUND CONCRETE SLAB WHEN NOT IN SIDEWALK, AS INDICATED IN DESIGN STANDARDS.

NOTE TO DESIGNERS

1. REMOVE, EDIT OR ADD GENERAL NOTES AS NECESSARY TO ASSURE COMPATIBILITY WITH YOUR PARTICULAR PROJECT.
2. ADD ADDITIONAL PER ITEM NOTES FOR ITEMS THAT ARE NOT COVERED BY THE STANDARDS.



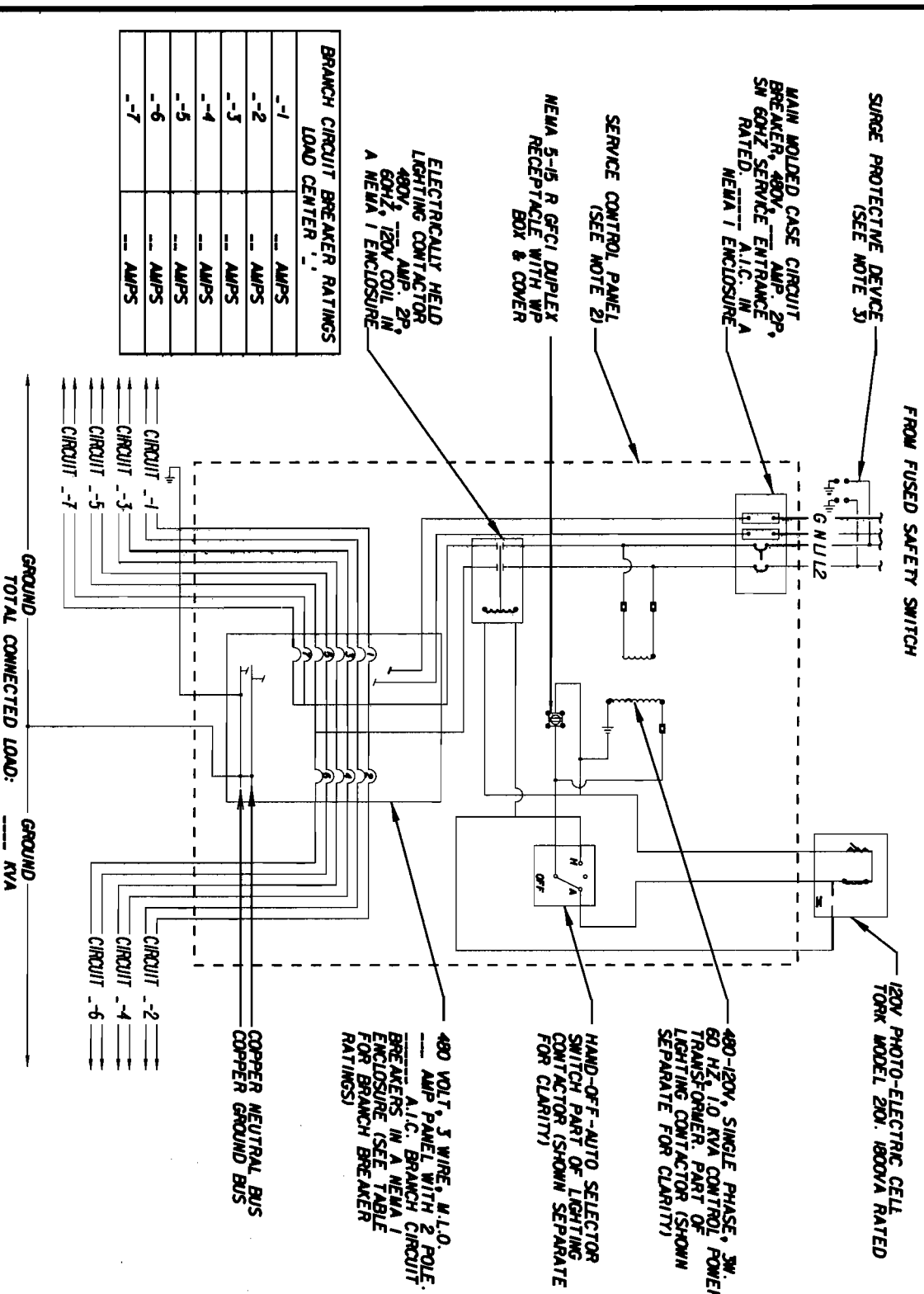
DATE	DESCRIPTION	REVISIONS	DATE	DESCRIPTION

STATES OF FLORIDA		DEPARTMENT OF TRANSPORTATION	
ROAD NO.	COUNTY	FINANCIAL PROJECT ID	

PAY ITEM AND GENERAL NOTE SHEET		SHEET NO.
ROADWAY LIGHTING DESIGN		
		201
		(1 OF 1)

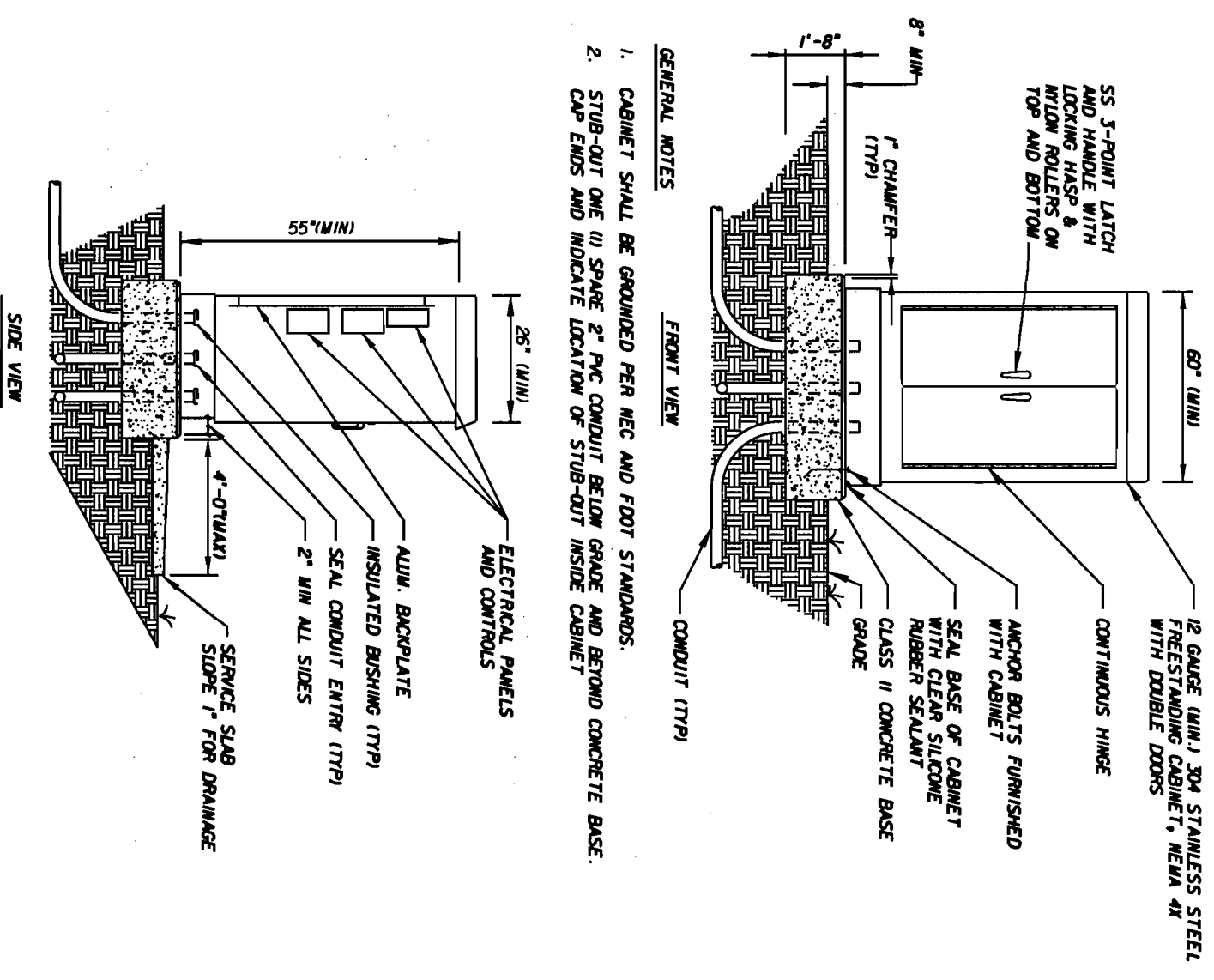


- NOTES:
1. ALL WIRING INSIDE SERVICE CONTROL PANEL SHALL BE INSTALLED IN INTERMEDIATE METAL CONDUIT.
  2. CONTRACTOR SHALL FURNISH ENCLOSURE SIZED FOR THE EQUIPMENT (SEE ENCLOSURE DETAIL THIS SHEET).
  3. SURGE PROTECTIVE DEVICE (SPD): SPD UNIT SHALL BE WIRED INSIDE THE ENCLOSURE AS PER FOOT STANDARD INDEX (FSO4. SPD UNIT SHALL BE MOUNTED ON THE OUTSIDE OF THE ENCLOSURE AND COMPLY WITH UL 1449 LATEST ADOPTED EDITION.
  4. SHOP DRAWINGS REQUIRED FOR ALL EQUIPMENT ASSOCIATED WITH THE LOAD CENTER.

LOAD CENTER SCHEMATIC DIAGRAM

N.T.S.

- GENERAL NOTES
1. CABINET SHALL BE GROUNDED PER NEC AND FOOT STANDARDS.
  2. STUB-OUT ONE (1) SPARE 2" PVC CONDUIT BELOW GRADE AND BEYOND CONCRETE BASE. CAP ENDS AND INDICATE LOCATION OF STUB-OUT INSIDE CABINET.



LOAD CENTER ENCLOSURE DETAIL

N.T.S.

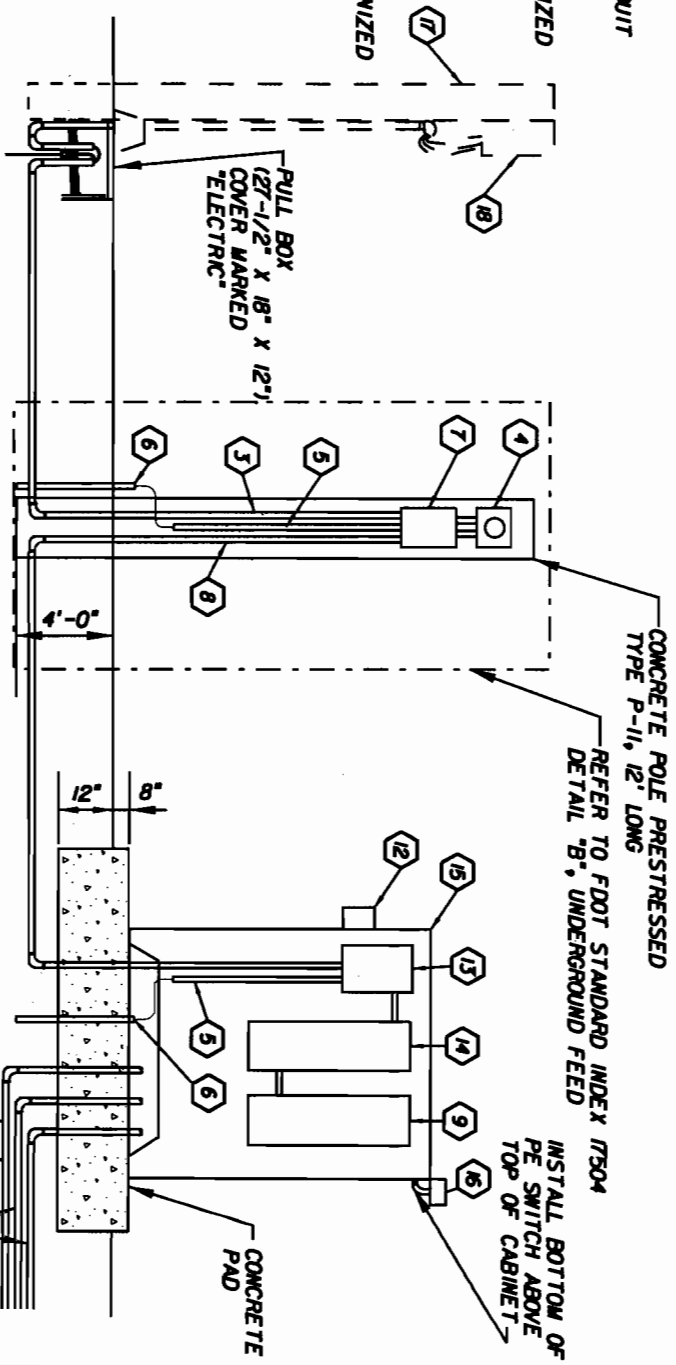
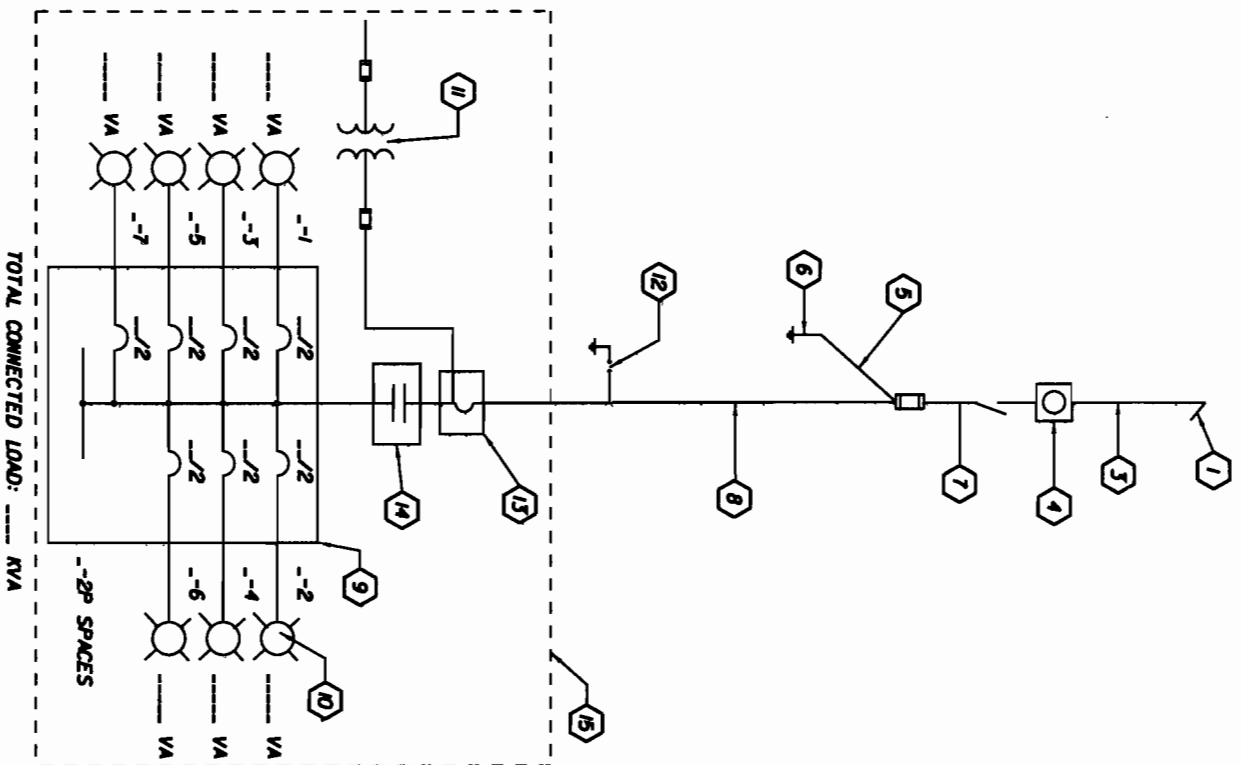
REVISIONS	
DATE	DESCRIPTION

STATE OF FLORIDA	
DEPARTMENT OF TRANSPORTATION	
ROAD NO.	COUNTY
FINANCIAL PROJECT ID	

FLORIDA TURNPIKE	
SERVICE POINT DETAILS	
SHEET NO.	202
	(1 OF 2)

**KEYED NOTES**

- 1 240/480 V SINGLE PHASE 3-WIRE "LIST POWER COMPANY" ELECTRIC SERVICE
- 2 NOT USED
- 3 2# 1" AWG & 1# 1/2" AWG (N) IN 1" RIGID GALVANIZED STEEL CONDUIT
- 4 WETER AS REQUIRED. HEIGHT SPECIFIED BY POWER COMPANY.
- 5 1# 1" AWG INSULATED COPPER GROUND WIRE IN 1" RIGID GALVANIZED STEEL CONDUIT
- 6 COPPER CLAD GROUND RODS, MIN. 3/8" DIA. 20' LONG, 6' MIN. SEPARATION BETWEEN THEM
- 7 FUSED AMP, 600V, 2-POLE S/N HEAVY DUTY NEMA 3R
- 8 2# 1" AWG, 1# 1/2" AWG (N), & 1# 1/2" AWG (G) IN 1" RIGID GALVANIZED STEEL CONDUIT
- 9 PANEL BOARD, AMP, 480V, SINGLE PHASE, 3-WIRE WITH CIRCUIT BREAKERS AND GROUND BAR AS INDICATED
- 10 ROADWAY LUMINAIRE CONNECTED TO CIRCUIT --2
- 11 CONTROL TRANSFORMER 1 KVA SINGLE PHASE, 480V PRIMARY 120V SECONDARY
- 12 SURGE PROTECTIVE DEVICE (SPD)
- 13 MAIN CIRCUIT BREAKER --- AMPS, 2-POLE, 480V, --- A/C
- 14 --- AMP, 2-POLE, ELECTRICALLY HELD CONTACTOR
- 15 FREE STANDING NEMA 4X STAINLESS STEEL ENCLOSURE WITH TWO DOORS
- 16 PHOTOELECTRIC SWITCH
- 17 "LIST POWER COMPANY" CONCRETE SERVICE POLE
- 18 "LIST POWER COMPANY" TRANSFORMER



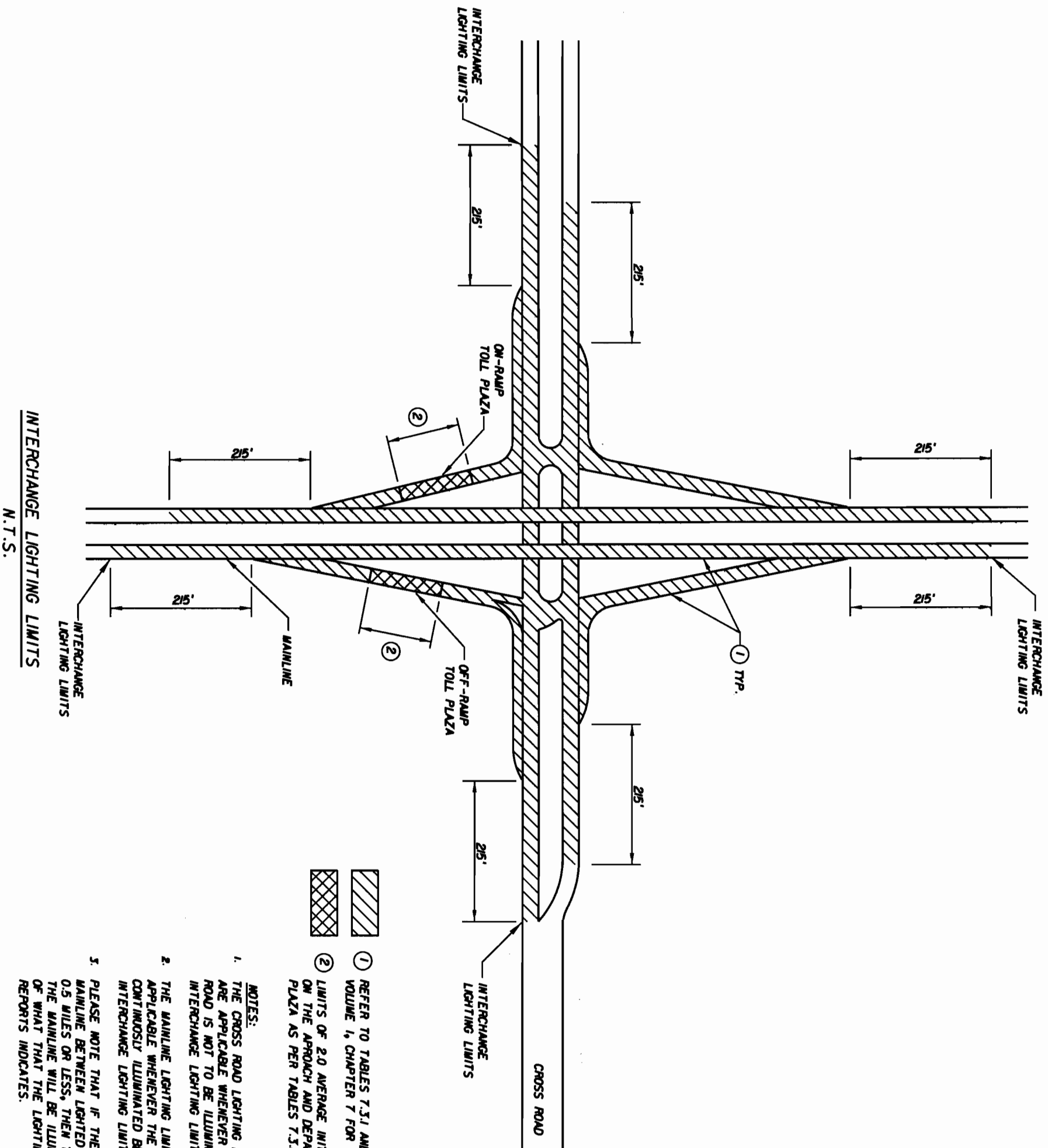
**ONE LINE DIAGRAM**  
N.T.S.

**RISER DIAGRAM**  
N.T.S.

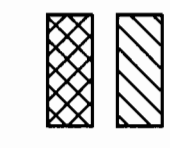
REVISIONS	
DATE	DESCRIPTION

STATE OF FLORIDA	
DEPARTMENT OF TRANSPORTATION	
ROAD NO.	COUNTY
FINANCIAL PROJECT ID	

**FLORIDA TURNPIKE**  
**SERVICE POINT DETAILS**



INTERCHANGE LIGHTING LIMITS  
N.T.S.



- ① REFER TO TABLES 7.3.1 AND 7.3.2 OF TYPFH VOLUME 1, CHAPTER 7 FOR ILLUMINATION LEVELS.
- ② LIMITS OF 2.0 AVERAGE INITIAL FOOT-CANDELES ON THE APPROACH AND DEPARTURE OF A RAMP TOLL PLAZA AS PER TABLES 7.3.1 AND 7.3.2.

NOTES:

- 1. THE CROSS ROAD LIGHTING LIMITS SHOWN ARE APPLICABLE WHENEVER THE CROSS ROAD IS NOT TO BE ILLUMINATED BEYOND THE INTERCHANGE LIGHTING LIMITS SHOWN.
- 2. THE MAINLINE LIGHTING LIMITS SHOWN ARE APPLICABLE WHENEVER THE MAINLINE IS NOT CONTINUOUSLY ILLUMINATED BEYOND THE INTERCHANGE LIGHTING LIMITS SHOWN.
- 3. PLEASE NOTE THAT IF THE LENGTH OF THE MAINLINE BETWEEN LIGHTED INTERCHANGES IS 0.5 MILES OR LESS, THEN THAT SECTION OF THE MAINLINE WILL BE ILLUMINATED REGARDLESS OF WHAT THAT THE LIGHTING JUSTIFICATION REPORTS INDICATES.

REVISIONS		DATE		DESCRIPTION	

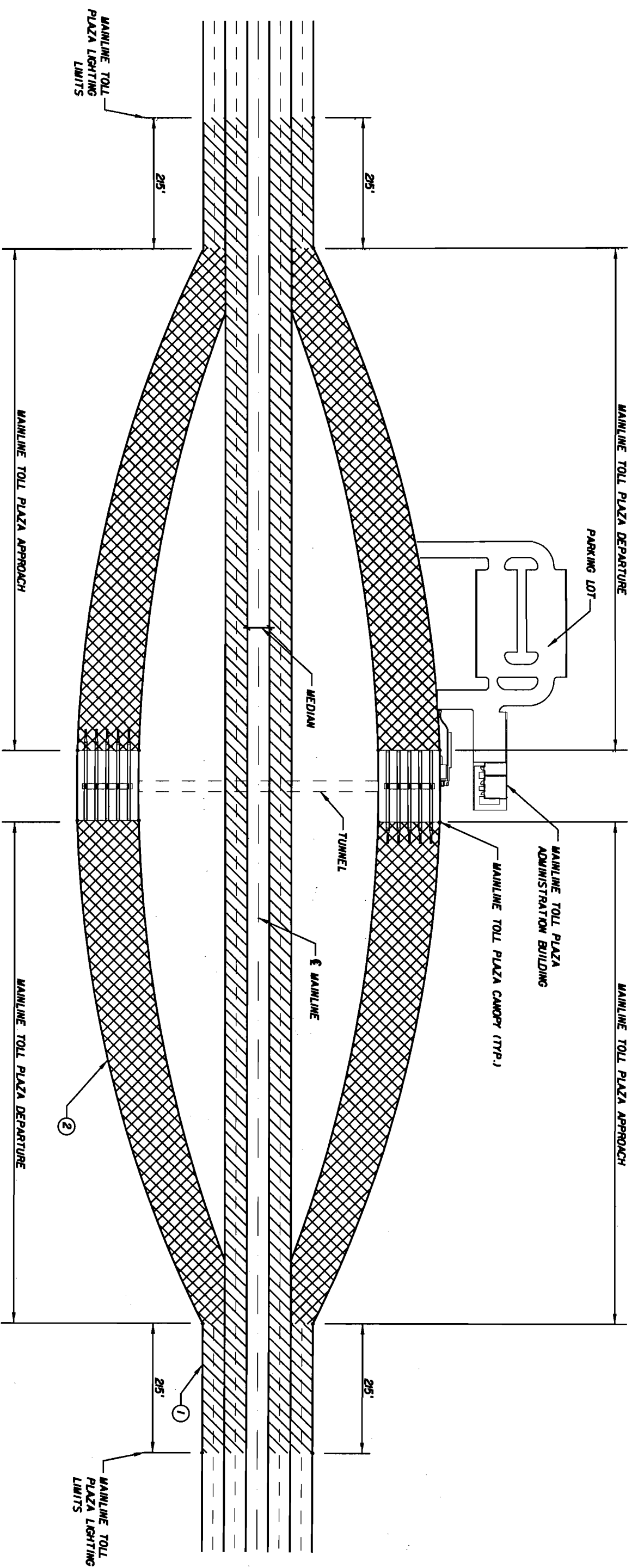
  

DATE	DESCRIPTION	STATE OF FLORIDA DEPARTMENT OF TRANSPORTATION	ROAD NO.	COUNTY	FINANCIAL PROJECT ID

SHEET NO.	203
(1 OF 1)	

INTERCHANGE  
LIGHTING LIMITS



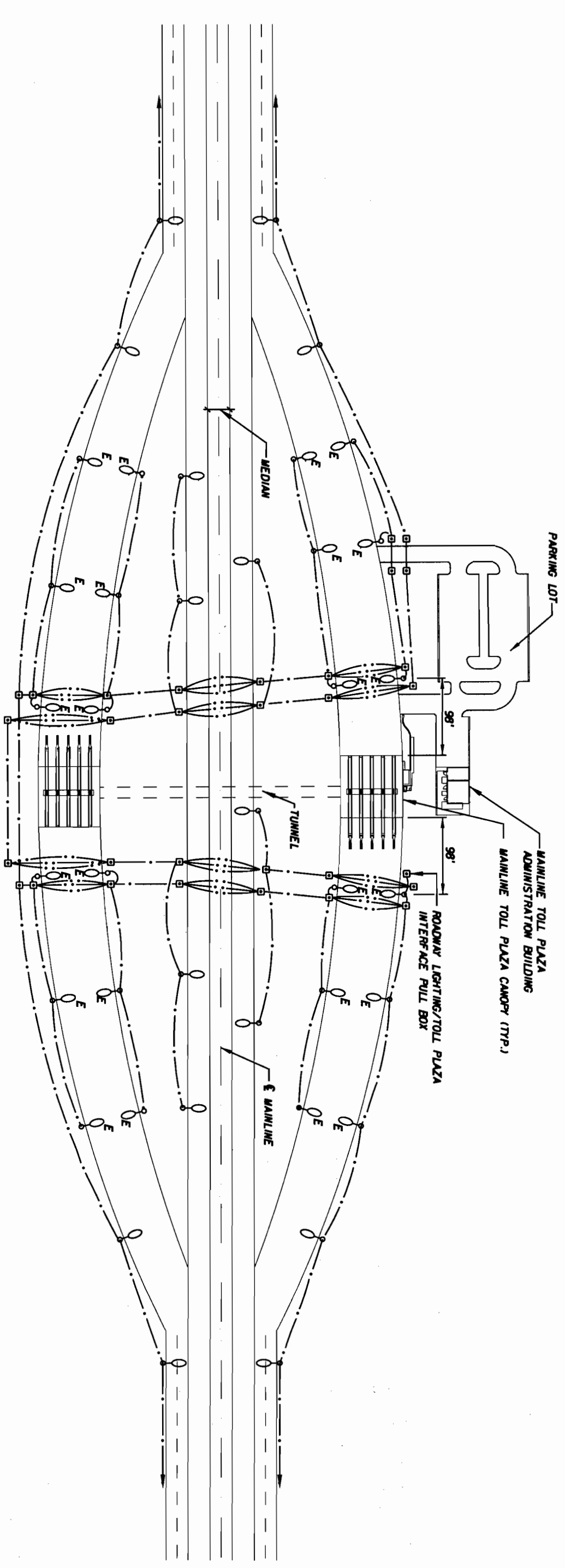
**MAINLINE TOLL PLAZA APPROACH AND DEPARTURE LIGHTING LIMITS**

N.T.S.

- ① REFER TO TABLES 7.5.1. AND 7.5.2 OF TPPPH VOLUME 1, CHAPTER 7 FOR MAINLINE ILLUMINATION LEVELS.
- ② LIMITS OF 2.0 AVERAGE INITIAL FOOT-CANDELES ON THE APPROACH AND DEPARTURE OF A RAMP OF TPPPH VOLUME 1, CHAPTER 7.

NOTES:  
 1. THE MAINLINE LIGHTING LIMITS SHOWN ARE APPLICABLE WHENEVER THE MAINLINE IS NOT CONTINUOUSLY ILLUMINATED.

REVISIONS		STATE OF FLORIDA	FINANCIAL PROJECT ID		<b>MAINLINE TOLL PLAZA LIGHTING LIMITS</b>	SHEET NO. <b>204</b> (1 OF 1)
DATE	DESCRIPTION	DEPARTMENT OF TRANSPORTATION	ROAD NO.	COUNTY		



**LEGEND:**

- ROADWAY LUMINAIRE FED FROM ROADWAY LIGHTING LOAD CENTER
- ROADWAY LUMINAIRE FED FROM PLAZA STAND-BY GENERATOR PANEL
- ROADSIDE PULL BOX
- CONDUIT, UNDERGROUND
- CONDUIT, UNDERPAVEMENT

**MAINLINE TOLL PLAZA APPROACH AND DEPARTURE LIGHTING LOCATION**  
N.T.S.

- NOTES:**
1. THE EXACT LOCATION OF THE LUMINAIRES SHALL BE AS DICTATED BY THE LIGHTING CALCULATIONS.
  2. ROADWAY LIGHTING BRANCH CIRCUIT CONDUITS SHALL NOT BE INSTALLED THROUGH THE TOLL PLAZA ADMINISTRATION BUILDING/TUNNEL AREA.

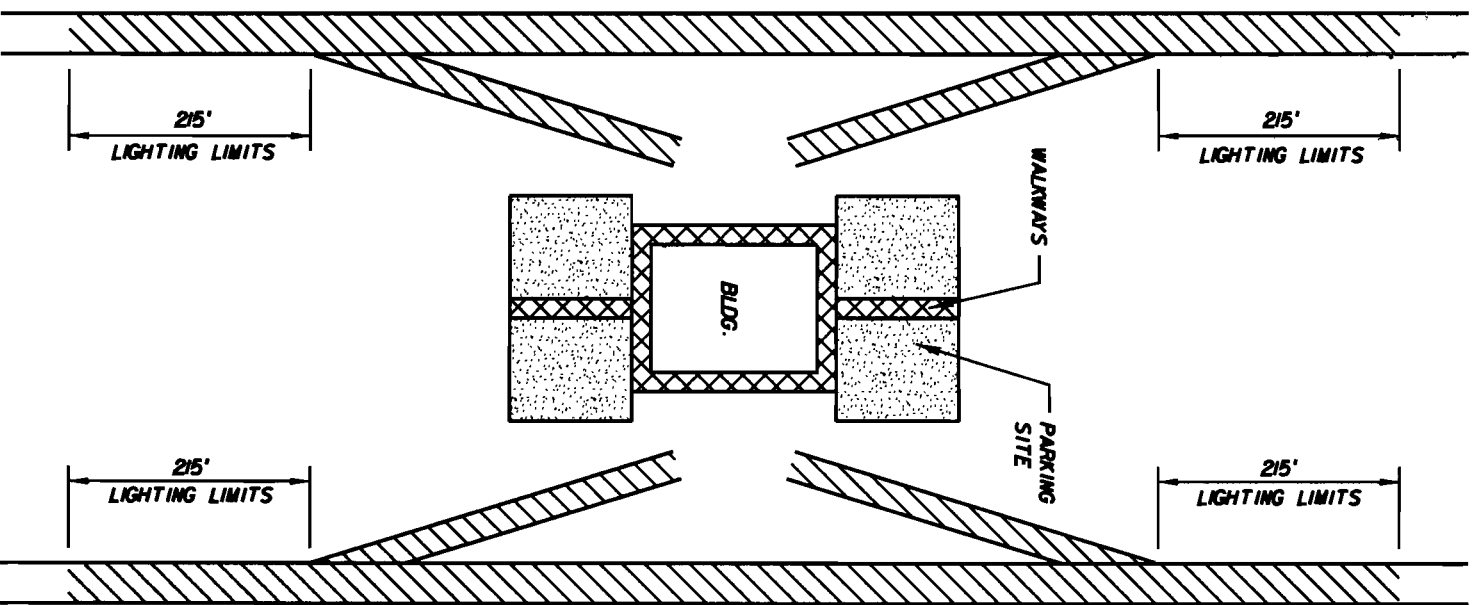
REVISIONS		DESCRIPTION	
DATE	DESCRIPTION	DATE	DESCRIPTION

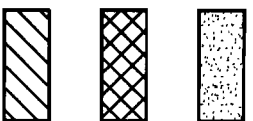
<b>STATE OF FLORIDA</b>			
<b>DEPARTMENT OF TRANSPORTATION</b>			
ROAD NO.	COUNTY	FINANCIAL PROJECT ID	
		-- --	

<b>MAINLINE TOLL PLAZA LIGHTING LOCATION</b>	SHEET NO. 205 (1 OF 11)
--	-------------------------



**SERVICE PLAZA LIGHTING LIMITS**  
N.T.S.



PARKING LOT AND SITE: 1.5 AVERAGE INITIAL FOOT-CANDLES AS PER TABLE 7.3.5 OF TRPPH VOLUME 1, CHAPTER 7.

BLDG. PERIMETER AND WALKWAYS: 2.0 AVERAGE INITIAL FOOT-CANDLES AS PER TABLE 7.3.5 OF TRPPH VOLUME 1, CHAPTER 7.

LIMITS OF 1.7 AVERAGE INITIAL FOOT-CANDLES FOR NON-ILLUMINATED ROADWAYS

NOTES:  
1. THE MAINLINE LIGHTING LIMITS SHOWN ARE APPLICABLE WHENEVER THE MAINLINE IS NOT CONTINUOUSLY ILLUMINATED.

REVISIONS		
DATE	DESCRIPTION	DATE

STATE OF FLORIDA		
DEPARTMENT OF TRANSPORTATION		
ROAD NO.	COUNTY	FINANCIAL PROJECT ID

STATE OF FLORIDA		
DEPARTMENT OF TRANSPORTATION		
ROAD NO.	COUNTY	FINANCIAL PROJECT ID

STATE OF FLORIDA		
DEPARTMENT OF TRANSPORTATION		
ROAD NO.	COUNTY	FINANCIAL PROJECT ID

STATE OF FLORIDA		
DEPARTMENT OF TRANSPORTATION		
ROAD NO.	COUNTY	FINANCIAL PROJECT ID

**SERVICE PLAZA LIGHTING LIMITS**

SHEET NO. 206

(1 OF 1)

K02310

3/4/200

10:33:57 AM

...SERVICE PLAZA LIGHTING LIMITS-206.dgn