



CONSTRUCTION UPDATE

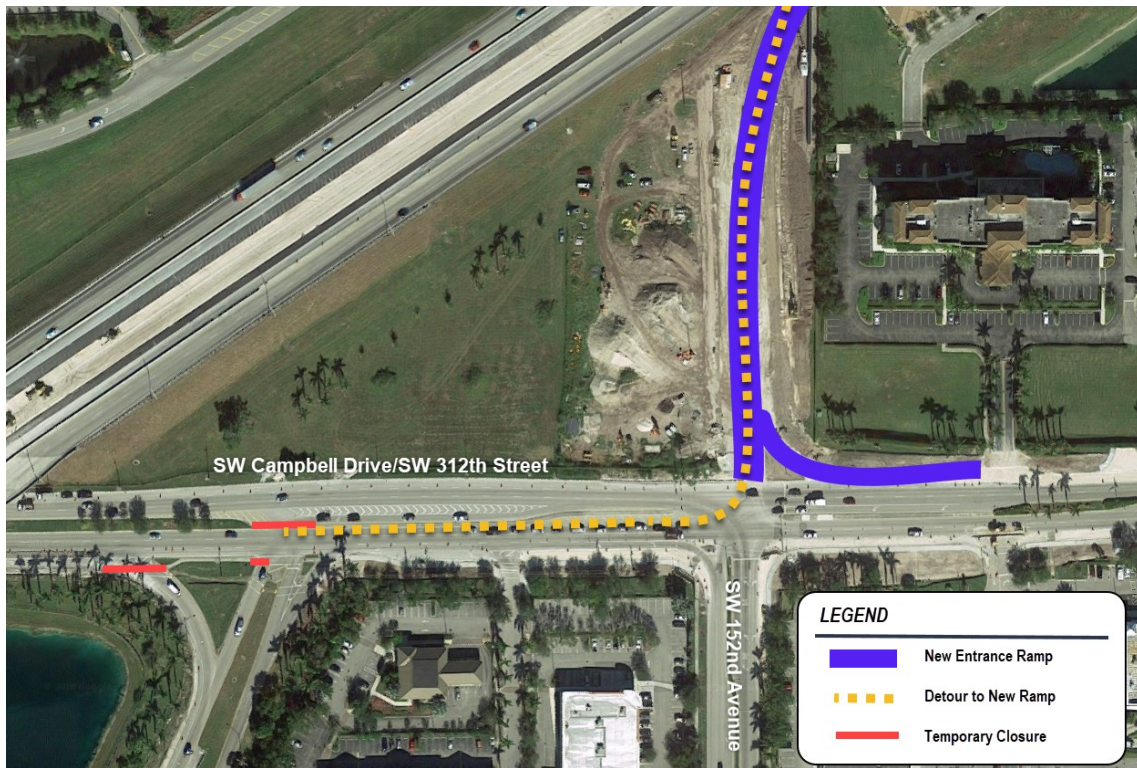
CAMPBELL DRIVE AND FLORIDA'S TURNPIKE INTERCHANGE MODIFICATION PROJECT



NEW ENTRANCE RAMP FROM CAMPBELL DRIVE OPENS

Existing entrance ramps on Campbell Drive will close temporarily and reopen end of Summer 2018

As part of the ongoing modification project at the Campbell Drive and Florida's Turnpike interchange, Florida's Turnpike Enterprise is scheduled to open the new northbound Florida's Turnpike entrance ramp from Campbell Drive/SW 312th Street on Wednesday, July 18, 2018. The existing entrance ramps from Campbell Drive will be temporarily closed for construction activities and will reopen before the end of Summer 2018. All motorists wishing to travel northbound on the Turnpike will be directed to use the new entrance ramp at Campbell Drive and SW 152nd Avenue. Please note this schedule may change due to inclement weather or other unforeseen conditions.



PUBLIC INFORMATION

To receive future construction updates via e-mail, please contact:

yasir.mercado@dot.state.fl.us

Yasir Mercado, Public Information Officer

954-934-1138 or 1-800-749-PIKE

Yasir.Mercado@dot.state.fl.us

www.FloridasTurnpike.com

twitter.com/FLTurnpikeSFL





Florida's Turnpike Enterprise
PO Box 9828
Fort Lauderdale, FL 33310-9828

PRSR STD
US Postage
Paid
Ft. Lauderdale, FL
Permit No. 3873



CAMPBELL DRIVE AND FLORIDA'S TURNPIKE INTERCHANGE MODIFICATION PROJECT

NEW ENTRANCE RAMP & DETOUR FROM EXISTING ENTRANCE RAMPS

