

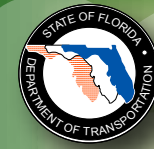
I-4 / SELMON EXPRESSWAY INTERCHANGE
From I-4 to the Lee Roy Selmon Expressway

Toll Rate Rule Development Workshop



Four Ways To Comment

- Oral Statement to Court Reporter this evening
 - Written Statement for submittal this evening
 - Written comments submitted in 10 days or less to:
 - Christa Deason, Public Information Officer
Florida's Turnpike Enterprise
PO Box 613069
Ocoee, FL 34761
- or
- E-mail to christa.deason@dot.state.fl.us
- All Comments due by March 5, 2009



I-4 / SELMON EXPRESSWAY INTERCHANGE
From I-4 to the Lee Roy Selmon Expressway

FPID: 258415-1, 2, & 3

Toll Rate Rule Development Workshop

**Interstate 4 / Lee Roy Selmon
Expressway Interchange**

**February 19, 2009
Port of Tampa Board Room**

Florida's Turnpike Enterprise, part of the Florida Department of Transportation, is hosting a Toll Rate Rule Development Workshop for the purpose of providing an opportunity for the public to express their views concerning the development of toll rates for the I-4/Lee Roy Selmon Expressway Interchange (Connector).

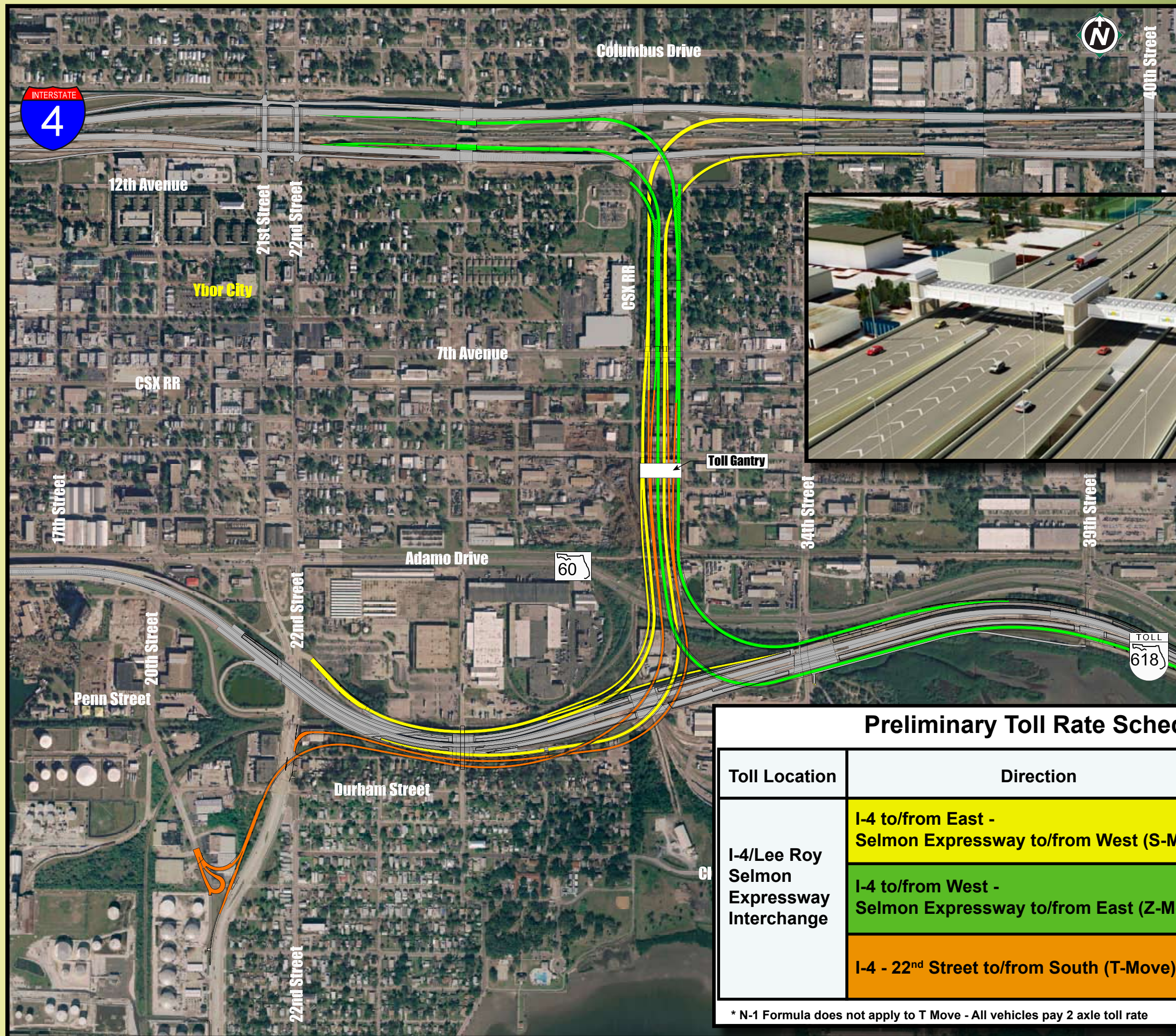
The Department is proposing to construct the Connector, a limited-access interchange that extends from the Lee Roy Selmon Expressway north along the west side of 31st Street to I-4. This is an elevated roadway that includes a series of separate ramps intended to improve the regional movement of traffic throughout the Tampa Bay area and provide dedicated truck lanes for direct access to the Port of Tampa. It is consistent with proposed improvements to I-4, the Lee Roy Selmon Reversible Lanes Project, and the Causeway Boulevard Port Access Improvement project. Tolls are proposed to be collected from vehicles using the SunPass collection method only, by an overhead gantry located on the project south of 7th Avenue.





I-4 / SELMON EXPRESSWAY INTERCHANGE

From I-4 to the Lee Roy Selmon Expressway



Preliminary Toll Rate Schedule		
Toll Location	Direction	2 Axle Future Toll
I-4/Lee Roy Selmon Expressway Interchange	I-4 to/from East - Selmon Expressway to/from West (S-Move)	\$1.00
	I-4 to/from West - Selmon Expressway to/from East (Z-Move)	\$0.50
	I-4 - 22 nd Street to/from South (T-Move)	\$1.00*

* N-1 Formula does not apply to T Move - All vehicles pay 2 axle toll rate